

Community Funds, Inc. – Q4 2025 Performance

(All Performance Data is Net of Fees)

All Options are listed in order of each fund’s risk profile, from least to most

Vanguard Federal Money Market Fund (Fund No. 0033 – VMFXX)

7 Day SEC Yield: 3.59% as of 03/06/2026

Expense Ratio: 0.11% as of 12/19/2025

The Vanguard Federal Money Market Fund is chosen by donors who expect substantial near-term payouts or for those who would like a liquid allocation within their investments.

Performance as of 12/31/2025

	QTR	YTD	1 Year	3 Year	5 Year	10 Year
VMFXX	0.99%	4.22%	4.22%	4.85%	3.20%	2.14%
Benchmark	0.87%	3.77%	3.77%	4.37%	2.86%	1.77%

Benchmark: US Gov’t Money Market Funds Average

[Click here for more information:](#)

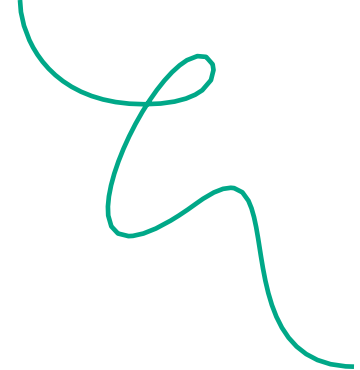
Vanguard LifeStrategy Conservative Growth Fund (Fund No. 0724 – VSCGX)

30 Day SEC Yield: 3.03% as of 2/28/2026

Dividend Yield: 1.65% as of 1/31/2026

Expense Ratio: 0.10% as of 2/27/2026

The Vanguard LifeStrategy Conservative Growth Fund offers donors exposure to a mix of bonds and equities that generates current income while protecting principal. This Fund is typically selected by donors who have a payout time horizon of 10 – 15 years or less. The Fund invest in four other Vanguard Funds that have a 60% allocation to U.S. and international fixed income, and a 40% allocation to U.S. and international equities.



Performance as of 12/31/2025

	QTR	YTD	1 Year	3 Year	5 Year	10 Year
VSCGX	1.83%	12.86%	12.86%	10.93%	4.24%	6.12%
Benchmark	1.95%	12.96%	12.96%	11.09%	4.49%	6.38%

Benchmark: Conservative Growth Composite Index

[Click here for more information:](#)

Vanguard STAR Fund (Fund No. 0056 VGSTX)

30 Day SEC Yield: 2.39% as of 3/9/2026

Dividend Yield: 1.72% as of 1/31/2026

Expense Ratio: 0.29% as of 2/27/2026

The Vanguard STAR Fund seeks to provide long-term capital appreciation and income by investing in a balanced allocation of stocks, bonds, and short-term investments. The Fund invests in several actively managed Vanguard mutual funds, rather than in individual securities. Similar to the CFI Pool, the Fund is most appropriate for donors whose funds have an infinite investment time horizon. Unlike the CFI Portfolio, the Fund offers daily liquidity.

Performance as of 12/31/2025

	QTR	YTD	1 Year	3 Year	5 Year	10 Year
VGSTX	2.88%	15.86%	15.86%	13.96%	5.88%	8.95%
Benchmark	2.52%	16.68%	16.88%	15.10%	7.80%	9.11%

Benchmark: STAR Composite Index

[Click here for more information:](#)

Vanguard FTSE Social Index Fund (Fund No. 0513 – VFTAX)

30 Day SEC Yield: 0.88% as of 2/28/2026

Dividend Yield: 0.98% as of 1/31/2026

Expense Ratio: 0.11% as of 2/02/2026

The Vanguard FTSE Social Index Fund offers donors a socially screened investment option. The Fund tracks the FTSE U.S. Choice Index, a benchmark of large and mid-capitalization stocks that are screened for social criteria such as workplace issues, environmental issues, product safety, human rights, and corporate responsibility. This Fund is 99% invested in U.S. equities and tends towards a growth orientation.

Performance as of 12/31/2025

	QTR	YTD	1 Year	3 Year	5 Year	10 Year
VFTAX	2.38%	17.24%	17.24%	24.86%	13.50%	-
Benchmark	2.42%	17.40%	17.40%	25.01%	13.65%	15.27%

Benchmark: FTSE *US Choice* Index

[Click here for more information:](#)

Community Funds Investment Pool

Expense Ratio: Up to 1%

The Community Funds Investment Pool is suitable for donors whose funds have an infinite investment time horizon. It aims to produce a return which provides for current grantmaking while also ensuring the ability to make future grants. The Pool is managed in-house and is allocated to both public and private investments across the globe. Up to 17% of the Pool may be allocated to private investments. This is the most illiquid investment vehicle offered to donors. The CFI Pool has investment minimums and is primarily reserved for funds that do not allow for the invasion of principal. Transfers in and out of the Pool occur only on the first business day of each month.

Performance as of 12/31/2025

	QTR	YTD	1 Year	3 Years	5 Years	10 Years
CFI Pool	2.37%	14.25%	14.25%	12.89%	6.74%	8.11%
Benchmark	2.44%	15.56%	15.56%	13.51%	6.97%	8.39%

Benchmark: CFI Pool Policy Benchmark

[Click here for more information:](#)