



For New York.
Forever.

100 The New York
Community Trust



2023 Annual Report



Top from L to R: Trust President Ralph Hayes, Maestro Max Rudolf, Rudolf Bing, Heidi Krall, and Trust Board Member Eleanor Robson Belmont in 1953. Heidi Krall was the recipient of a scholarship from a fund established by Madame Anna E. Schoen-Ren , a distinguished teacher of vocal artists.

Middle: A New York City fireman calls for more rescue workers to make their way into the rubble of the World Trade Center, September 15, 2001. REUTERS/U.S. Navy/Journalist 1st Class Preston Keres

Bottom: Photo courtesy of the **Statue of Liberty Ellis Island Foundation**, which used a Trust grant to move the statue's torch, seen here in transit, to an accessible museum.

Right: A 2018 Metro New York City cover features a Trust grant to the **NYC LGBT Historic Sites Project**. The nonprofit provided a tour of Greenwich Village for Trust donors.



For 100 years,

The New York Community Trust has connected the generosity and passions of charitable New Yorkers—and New Yorkers at heart—with the region’s most innovative and effective nonprofits to meet urgent needs and make lasting change.

The New York
Philharmonic
performs a
concert in
Central Park.
Photo by
Chris Lee



Ever Forward.

President Amy Freitag
(standing) and Board Chair
Jamie Drake. Photo by
Casey Kelbaugh



It's been 100 years since a New Yorker named Rosebel G. Schiff, to honor her beloved teacher at PS9 on the Upper West Side, donated \$1,000 to establish a fund at The New York Community Trust that would support the school. She became The Trust's first donor, and the first award from her fund—\$20—went to a high-performing student at the school.

Little did Mrs. Schiff know how her initial act of generosity would spark 100 years of New Yorkers, and New Yorkers at heart, giving back to the region they love. We imagine she would be pleased that her gift inspired thousands of donors to support the causes they love across generations.

As we mark a century of service—a mighty big milestone!—we both honor the past and dream about the future.

We have so much to celebrate. Together, we've built something that reflects the wonderfully diverse community we serve—an organization that is a true innovator in our field and a force for good for New York.

And we also believe our best work lies ahead.

Thanks to an incredible community of donors, nonprofits, and philanthropic partners, we embark on our second century ready to realize our shared vision of a vibrant and thriving New York.

Whether we're working to create more affordable housing, cleaner waterways, or more equitable access to quality education and arts programming, The Trust stands ready to energize future generations of New Yorkers who share our passion for making this ever-evolving region into a place where everyone can achieve their goals and pursue their dreams.

The obstacles ahead can seem daunting. But we are emboldened by our long history of meeting New York's challenges.

Cheers to you for being part of our first 100 years—and here's to helping shape New York's next century!

In gratitude,

Jamie Drake
Chair

Amy Freitag
President

TABLE OF CONTENTS

From the Chair and President	4
Three Become One	6
Feature Story	8
Grants in Action	16
Become a Donor	22
Donor Stories	24
Give with Others	26
For Advisors	28
Our Board	30
Advisory Boards	32
Financials	34
Investments	36
Lasting Legacies	38
Funds in 2023	40
The Trust by the Numbers ...	52



Printed in
New York State



Three Become One.

Left: A Trust grant helped the **Asian American Federation** develop community responses to the growing violence against Asian New Yorkers during the Covid-19 pandemic.

Middle: A grant from our Westchester office to **Jazz Forum Arts** supported free outdoor concerts. Photo by Jeffrey Friedkin

Right: Our Long Island office supported the **Conscience Point Shellfish Hatchery** in Southampton as it reintroduced oysters to Peconic Bay to clean the water and restore sea life. Photo by Ari Mintz

At The New York Community Trust, we serve a region that stretches from the eastern shore of Long Island, through the city's five boroughs, and to the history-rich neighborhoods of Westchester County.

For decades, The Trust has shown its commitment to Long Island and Westchester through the work of its branded affiliates, the Long Island Community Foundation and Westchester Community Foundation, which we have been pleased to lead.

While we used three separate names and brands, the Long Island Community Foundation and Westchester Community Foundation have always been interwoven into The Trust's work. Long Island and Westchester are central to The Trust's identity as New York's community foundation and to our vision of serving the eight-county region.

In conjunction with The Trust's—with our—100th anniversary, we're strengthening this vision by sunsetting the Long Island and Westchester monikers. Moving forward, our important work on Long Island and in Westchester will fall under The Trust's sole brand.

We encouraged this change because we believe it more accurately honors The Trust's mission to create an equitable and thriving New York region.



As part of The Trust, we will continue to serve Long Island and Westchester communities with the same dedicated staff and advisory boards, who will advance our important programmatic work and grantmaking commitments.

We'll also maintain a physical presence at our Westchester and Long Island offices and continue to honor and build upon our relationships with local nonprofits, donors, and communities.

Creating a single, unified brand amplifies our ability to powerfully advocate for our region with one voice.

We're delighted to share this news—and we are energized by what it means for our work.

In partnership,



David Okorn
Executive Director
Long Island



Laura Rossi
Executive Director
Westchester

A New Look for a New Century.

With this annual report, we proudly unveil a new visual identity that connects our rich history to the optimism and promise of the future.

The *New York* Community Trust

This new look—developed with the creative agency Hyperakt—captures the warmth and humanity of our work while reflecting the practicality and expertise earned over 100 years of serving New York.

With a bold new color palette and a clearer voice, our brand conveys continuity, resilience, and impact.

“Through New York’s greatest triumphs and challenges, The Trust has been there, and will continue to be there—a throughline from past to future, and a beating heart for a beloved region,” said Deroy Peraza, Hyperakt’s partner and creative director. “The Trust’s brand symbolizes its enduring commitment to the region and its people. It is a visual reminder that The Trust exists to shape a better future for New Yorkers.”



Scan this QR code to see the exciting journey of our logo.



Jyll-Hubbard Salk, owner of Urban Asanas in Crown Heights, Brooklyn, teaches her Urban Power Yoga class. Salk's business benefited from a Trust grant to **New York Professional Advisors for Community Entrepreneurship**. Photo by Ari Mintz

100 Years of Giving Local.

New York is more than a single community. It's a blend of thousands of smaller communities that form a beautiful—and sometimes chaotic—mosaic.

Some communities are built around neighborhoods. Others center around religion, ethnicity, gender, occupation, or interest. Each possesses its own culture and concerns. Yet together they form something much bigger—the world's most complex and diverse region.

Since 1924, The New York Community Trust has embraced and empowered this swirl of smaller communities. As New York's community foundation, we are grounded by the ideal that generous New Yorkers can achieve more when they join forces to support nonprofits that are working to create a healthy, equitable, and thriving New York.

The contributions of donors past and present helped The Trust award more than \$5.7 billion in grants since its founding—with \$3.3 billion more at the ready to fuel contributions to New York's nonprofits, now and in the future.

However, as we celebrate our 100th anniversary, our collective impact is measured by far more than dollars.

One thing the decades have proven is that The Trust is a philanthropic innovator. By working closely with donors, nonprofits, and other partners, we invented the donor-advised fund, blazed the trail for foundations to support LGBTQ+ communities, and created bold partnerships that have expanded diversity in the arts, advanced the rights of voters, and provided a lifeline to immigrants and refugees.

When New York has faced crises—from public health and weather emergencies to September 11th and the Great Recession of 2008—we've worked with donors and partners far and wide to help our community recover, rebuild, and become more resilient.

Yet with all of our accomplishments, our biggest challenges and opportunities lie ahead. We enter our second century at a time of turbulence in our region, our nation, and our world. It has never been more important to support the nonprofits advocating for and meeting the needs of our local communities. Together with the generous and diverse communities we serve, we are excited to chart a new vision for New York.

A Thread Connecting Donors Across Generations

Nancie Ellis first learned about The Trust during the 1980s, when she was growing up in the Westchester County town of Scarsdale and her parents had set up a fund at the Westchester Community Foundation. When Nancie and her husband, Geoffrey Domm, began to think seriously about their own philanthropic choices, they followed her parents' lead and created a fund at The Trust.

Today, their adult children, who have moved elsewhere, are giving through community foundations in their new home cities.

“The Trust’s longevity matters,” Ellis said. “They know the organizations and they are deeply involved in the community. I know that they understand the community’s needs, and I can get advice on where my donations can make the biggest difference.”

Ellis and her family are living examples of the thread that connects donors across multiple generations. That thread connects back to Rosebel G. Schiff, who in 1924 created the Theresa E. Bernholz Fund at The Trust with \$1,000 to honor a beloved teacher at PS9.

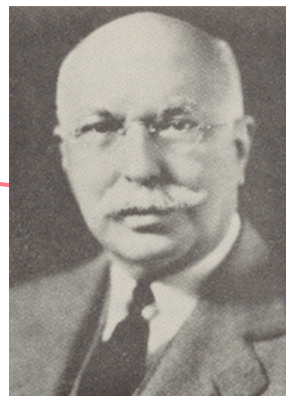
Today it continues forward to a new generation of New Yorkers whose contributions will build upon the generous legacies of donors who passed on decades ago but continue to make a difference in the communities they called home.

“We’re a foundation built by New Yorkers, for New Yorkers,” said The Trust’s president, Amy Freitag. “They’ve woven this incredible quilt of generosity that stitches together all of these individual funds for the permanent benefit of New York.”

A Century of Innovation

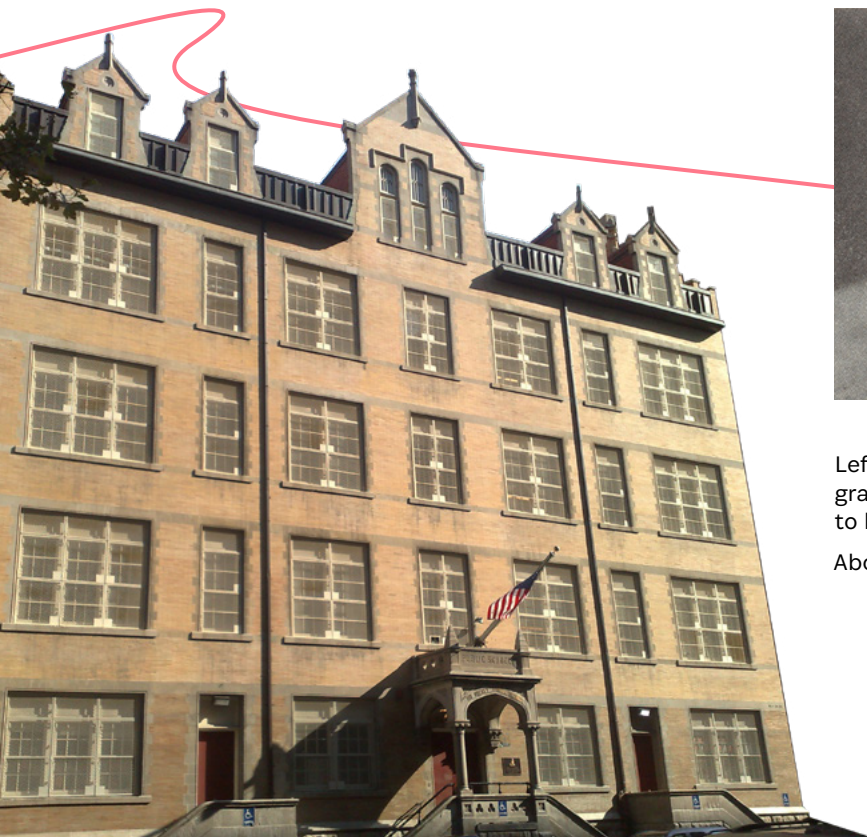
Those New Yorkers also built a foundation that became known for taking innovative approaches to philanthropy to address New York’s biggest challenges.

We began earning this reputation during our first decade, when William and Françoise Duclos Barstow approached us with a novel idea. The couple wanted to set up a permanent fund that would also give them the flexibility to make grants while they were still living. Together, we created a new type of giving instrument—the Barstow’s fund is widely believed to be the world’s first donor-advised fund.



Left: The Trust awarded its first grant in 1924 to PS9 in Manhattan to honor a beloved teacher.

Above: William Barstow





The Barstows established a tradition of innovation that has continued through the creativity of forward-thinking philanthropists like Francis Florio, who created a field-of-interest fund in his will to support medical research in blood diseases. Years later, his fund allowed The Trust to make one of the first private grants for AIDS research.

This tradition has carried through our donors' efforts to ensure New York continues to accommodate newly arrived immigrants and refugees, advance the work of historically underrepresented artists, educate future generations, and create leading-edge efforts to address climate change and environmental health.

Innovation remains front and center at The Trust, from offering new programs that

encourage impact investing to serving as the lead funder for the newly created **Community Foundation Climate Collaborative**. And this year our Coco Fund made its first grant to help low-income New Yorkers finance the cost of gender-affirming surgery.

While some century-old organizations can become set in their ways, The Trust is on a constant quest for new approaches to make a difference in the city and region it calls home.

“We are standing on the shoulders of giants who have never been afraid to think creatively,”

Above: A Grant to Staten Island's **Sundog Theatre** integrates learning with drama games and performance in local public elementary schools. Photo by Casey Kelbaugh

OLA, a multi-service Long Island grantee, brings affordable Tai-Chi classes to residents of the East End. Photo by Casey Kelbaugh



Freitag said. “Our challenge today is to drive the next generation of innovation. For us, that means exploring new approaches to impact investing and finding ways that donors can truly see how their philanthropy is making life better for people in all corners of our region.”

Longevity and Community

While innovation plays a major role in The Trust’s story, you don’t build a thriving, 100-year-old organization without also minding the fundamentals and taking the long view.

Lasting progress—especially in a region as large and complex as New York—takes time. As we work to address issues such as closing Rikers Island, mitigating the impact of climate change in our community, and reforming our immigration system, we must run marathons, not sprints. We must balance the urgency of our present challenges with the reality of what lies ahead. That requires investing heavily today while ensuring we can continue our investments over the long haul.

“What a community foundation offers is durability and a determined focus,” Freitag said.

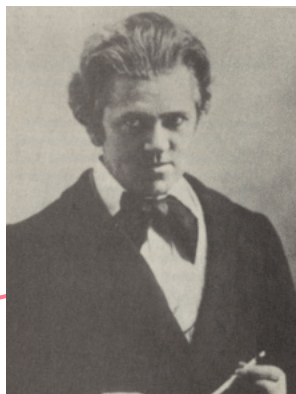
“Throughout our history, our biggest victories have come from a dogged, consistent, and determined approach to not back off.”

Donors often come to The Trust for the opportunity to support programs and projects that will echo through our region for many years after their initial gift and enable systemic reform. One great example is David Warfield, a famous actor from the 1920s who, after experiencing vision loss late in his life, made a gift in his will to The Trust to help others with vision loss. Over the past 75 years, his fund has helped make The Trust our region’s largest contributor to disability causes.

Warfield’s fund has granted millions of dollars—a figure many times larger than his original gift—and it will continue to support people with vision loss in our city for generations to come.

We take seriously our role as stewards of the wishes of our donors past and present, as well as our relationships with the communities we serve and the nonprofits we support. These relationships help us better understand the complex and diverse needs of our region.

In turn, we identify and support high-performing nonprofits like **Organización Latino Americana (OLA)**, which supports a growing, but often overlooked, population of immigrant and U.S.-born Latinx residents of Long Island’s East End. OLA Executive Director Minerva Perez and her team work directly with community members to meet their legal, health,



David Warfield

and educational needs while also serving as a liaison to local governments, police, and schools to advocate for more just and inclusive policies.

We have supported OLA’s work since 2017, building a deep relationship with an organization that is a lifeline for Latinx immigrant families and one of the few organizations doing this important work in an isolated region of Long Island.

“When we receive funding from The Trust, it is so critical because they really understand the value that we bring and the work that needs to be done,” Perez said.

With that understanding comes a keen awareness of what makes our region unique.

A Better Future for All New Yorkers

Indeed, our region is a collection of communities formed, at their heart, around the resilient idea that New York is a gateway for opportunity and a bastion for those “yearning to breathe free.”

Since our earliest days, newcomers from around the world and across our country have come here on the promise of building a better life. For many, that promise centers on building a career. For others, it’s the promise of finding a community of peers who hail from your home country, who practice your religion, or who share your identity.

You can find that community here in New York. And you can find that community here at The Trust.

It’s where Abdel Afghani—a Saudi immigrant who came to Staten Island and pursued a career as an accountant—chose to set up a permanent fund to plant trees in all five boroughs.



It's where a fund created from the estate of Brooke Astor, known in New York as the city's "First Lady of Philanthropy," sparked a new reading curriculum for our public schools.

It's where Hallie S. Hobson, a Harlem-based entrepreneur who provides consulting to arts nonprofits, set up a fund to honor her late father and support culture.

And it's where a diverse group of future donors will make their own legacies, connecting their generosity to the thread that started with Rosebel G. Schiff and William and Françoise Duclos Barstow and includes Nancie Ellis and so many others.

"To solve the challenges of the future, we need to keep adding to this quilt of generosity," Freitag said. "We've been creating it for 100 years, and it's our responsibility to keep expanding it and keep moving forward." ■



Photo courtesy of the **New York Immigration Coalition**, an organization The Trust helped start in 1987. The group is seen here at a rally to protect immigrant rights.

An Innovator— and an Incubator

The eight-county region we serve is home to more than 75,000 nonprofits—and an impressive number of those organizations got their start with support from The Trust.

During our first century, we've provided guidance and financial support that helped start an exceptional group of New York nonprofits, including:

- **Ali Forney Center**
- **American LGBTQ+ Museum**
- **Bronx River Alliance**
- **Brooklyn Communities Collaborative**
- **Chhaya Community Development Corp.**
- **Coalition for Behavioral Health**
- **Friends of Governors Island**
- **God's Love We Deliver**
- **Harlem RBI**
- **INCLUDEnyc**
- **Latino Commission on AIDS**
- **New Visions for Public Schools**
- **New York Birth Control Access Project**
- **New York Immigration Coalition**
- **Nonprofit Staten Island**
- **NYC LGBT Historic Sites Project**
- **One Brooklyn Health System**
- **Peconic Land Trust**
- **Philanthropy New York**
- **Tri-State Transportation Campaign**
- **Waterfront Alliance**
- **Youth Justice Network**

We've also played a key part in creating national organizations, such as the **Council on Foundations**, **Grantmakers In Health**, the **Community Foundation Awareness Initiative**, and the **Nonprofit Finance Fund**.

Our team is always on the lookout for promising new organizations that are meeting the emerging needs of the diverse communities in our region and beyond. We're excited to incubate the next generation of nonprofit innovators.

Grants in Action.

For a century, The Trust has woven together the generosity of thousands of New Yorkers to help their neighbors secure stable housing and good nutrition, while also ensuring access to great art, comfortable green spaces, and meaningful civic influence.

2023 was no different.

“While New York teetered on the edge of recession and newcomers poured into the city fleeing dire conditions in other parts of the world, we proved once again that The Trust can use a combination of philanthropic support for direct services, research, and advocacy to make our region more accessible and welcoming for all its residents, from the newest to the oldest,” said Shawn Morehead, our vice president for grants.

This snapshot of our grantmaking provides a glimpse into the incredible work of the thousands of nonprofits that make our region an unparalleled place to live, work, and play. We’re grateful to the charitable New Yorkers whose legacies fuel our grantmaking and make this work possible. ■

Photo courtesy of **Planned Parenthood of Greater New York**, which used a recent Trust grant to improve care across the region.





Helping New Yorkers Secure Stable Housing

For the first time in history, New York City's homeless shelter population is greater than 100,000. For many unhoused New Yorkers, the path to a stable home is rife with challenges, particularly given New York's affordable housing deficit. **Homeward NYC** is using a Trust grant to help residents overcome these obstacles by providing more than 400 unhoused residents and hundreds of formerly homeless residents with supportive resources to remain permanently housed. Our **Delacorte Fund**, which allows unrestricted giving, contributed to this grant.



Advancing Reproductive Health Care

Just months after five local Planned Parenthood affiliates merged as **Planned Parenthood of Greater New York**, Covid-19 struck, forcing them to delay operational changes that could have drastically improved care. Our grant helped the agency institute these changes by streamlining operations and policies across its 23 clinics. To date, Planned Parenthood has optimized its reproductive health services for more than 100,000 patients across 31 counties. Our **Rebecca and Nathan Weiss Fund**, which improves the delivery and accessibility of health services, helped make this grant possible.

Photo courtesy of **Imani Winds**, which is using a Trust grant to create a digital platform for musicians to produce and share their work.



Developing Media Literacy Skills in Long Island Schools

The rapid spread of misinformation on social media has made media literacy an essential skill. With renewed support from The Trust, **Stony Brook University** is expanding its News Literacy Education program to the Hampton Bays and Malverne school districts to prepare young people for informed media consumption. The grant supports curriculum development, training for teachers, and a news literacy outreach program for families and community members in partner districts. The **Wallace Fund for Youth-Long Island**, which supports learning and enrichment opportunities for children and youth, made this grant possible.



Strengthening New York's Arts Sector

As part of our efforts to strengthen small arts organizations, we made a three-year grant to the Grammy-nominated **Imani Winds** to create a digital platform for musicians to produce and stream their work. The group is subsidizing recording and production fees and providing artists with individual consultations. By helping artists expand their digital footprints, Imani Winds hopes to create new, meaningful opportunities for New York's artists and audiences. Our **Jane W. Kitselman Fund** supports classical chamber music and helped make this grant possible.

Championing Inclusive Opportunities

Few NYC-based summer camps exist for visually impaired young people, a deficit that limits educational and social development opportunities. We're helping meet this need by supporting the establishment of a Brooklyn summer program for school-aged children with blindness and low vision. Run by **Jewish Community Center (JCC) Brooklyn**,

the camp offers inclusive recreational activities that teach social and life skills and provide participants with an equitable camp experience. Our **David Warfield Fund** supports services for those with visual disabilities and helped make this grant possible.



Photo courtesy of **JCC Brooklyn**'s Camp for Children who are Blind or have Low Vision. A Trust grant helped the JCC launch this camp, which is now getting ready for its second summer.



Ensuring Migrants Receive Essential Health Care

In response to New York's ongoing influx of migrants, many of whom are unvaccinated children, we supported a vaccination program that prioritizes recent migrants in neighborhoods in Queens, Brooklyn, and the Bronx. The program is led by the **Floating Hospital and Care for the Homeless**. Each agency vaccinated 700 migrants and is advocating for further vaccinations as part of a comprehensive public health approach to care for new migrants. Our **Laura Spelman Rockefeller Memorial Fund** focuses on health and welfare and is one of several funds that made this grant possible.

Grantees **Floating Hospital** and **Care for the Homeless** provided this mother and daughter, along with hundreds of other migrants, with free vaccinations and other primary care. Photo by Rebecca Smeyne/CKA





Supporting Youth Activism

Following the 2020 protests for racial justice, **Avenues for Justice** launched a virtual media advocacy program as an alternative way for justice-involved young people to make their voices heard. With renewed support from The Trust, the group is continuing to provide a creative advocacy outlet for participants through digital literacy and restorative justice classes. To date, the program has helped equip and empower 50 young people to become activists. The **Bear Sterns Award** invests in innovative programs benefiting New Yorkers and supported this grant.

Improving Literacy Through Arts Programming

Currently, only half of New York City students enter fifth grade as proficient readers. To address this challenge, we made a two-year grant to **Young People's Chorus** for a school chorus program for fifth graders that combines choral education with teaching techniques that develop foundational literacy skills like phonological and phonemic awareness, comprehension, and vocabulary building. Our **John Paul Itta and Tony Murray Fund**, which supports arts and music education, helped make this grant possible.

Advancing Sustainability in Westchester County

Because climate action must occur at the local level, **Sustainable Westchester** provided technical assistance to the cities of Peekskill and Yonkers to create community thermal energy networks. These networks connect multiple buildings together and leverage heat generated by existing infrastructure, such as municipal sewers, to deliver heating and cooling while reducing greenhouse gas emissions and saving the cities money. Sustainable Westchester's work is creating a model that other municipalities can adopt. Funds for this grant come partially from our **Henry Phillip Kraft Memorial Fund** for environmental protection and improvement.

“My father gave his entire estate to The Trust. He loved New York City and was committed to its iconic nonprofits, which make arts and culture in our city world-class and adaptive to change in an ever more rapidly evolving world.”

- Ephraim Greenwall,
President, Talcott Holdings

“We needed professional, proven, and compassionate help when we started our giving circle in 1999. We got and continue to get all three & then some.”

- Deborah McManus, Cofounder,
Wellmet Philanthropy, a women’s giving circle at The Trust

Become a Donor.

“I love the fact that there are people that my family can reach out to at The Trust if they have any questions, and I encourage my kids to do this.”

- Amy Seiden,
Team Director of Philanthropy
for Mark Seiden Real Estate
Team at Howard Hanna |
Rand Realty

Tanisha Robinson and Michelle Heritage enjoy a special event spotlighting LGBTQ+ history for Trust donors and friends at the Stonewall Inn. Photo by Casey Kelbaugh



Give Local

There are so many reasons why giving locally makes sense: It supports the people closest to the issues and solutions, it's effective, it fosters local innovation, smaller grants can make a huge difference—we could go on and on! But one of the best parts is that giving close to home means you can see, hear, feel, and even taste the impact of your gift.

You can change the lives of your neighbors by funding programs in our public schools, you can improve your air and local waterways by supporting groups planting green roofs and electrifying transit. You can provide culinary training to low-income women who can become food entrepreneurs, and you can help your favorite arts groups thrive and enjoy exhibitions of incredible local talent.

And when you join The New York Community Trust's community of donors, we make sure you're familiar with great local groups working effectively on the issues you care about. You should feel confident and supported as you suggest grants, and we're here to make sure you do. ■

“Though I'd been aware of The Trust and its excellent work for decades, it was my accountant who pointed out the convenience and efficiency of The Trust as a vehicle for giving.”

– Dr. Michael R. McGarvey,
Former Chief Medical Officer,
Horizon Blue Cross Blue Shield
of New Jersey

Turn Your Assets into a Force for Good

Democratizing philanthropy means giving people the tools and options they need to sharpen and amplify their charitable giving to make a meaningful and lasting impact. That's what community foundations do.



Retirement accounts



Life insurance



Gifts of stock

We help people turn a variety of assets into charitable dollars. Retirement accounts, life insurance, real estate, stock—transform any of these into powerful, tax-smart donations. Creating your own fund at The Trust is a great way to get started. You can open almost any type of fund at The Trust with a donation, a simple letter of agreement, or a single paragraph in a will.

You also can give to The Trust directly, without having a fund. Support dozens of great nonprofits meeting urgent needs in New York, Long Island, and Westchester through a one-time or recurring gift to The Trust's Community Needs Fund, or donate to a giving circle.

Many of our donors also join us for briefings and events on issues and organizations critical to our region.

Get in touch with us:

Contact us at
giving@thenytrust.org

or

(212) 686-0010 x363

Donor Stories.



Samir Malik

Cofounder and CEO at Firsthand
Board Member, Zakat Fund of NYC

“With roughly 800,000 Muslims living in New York City, a few Muslim families, including ours, wanted to create a way to fulfill our Zakat (almsgiving). Zakat is an Islamic pillar of faith that involves giving back to those in need, especially the most vulnerable, such as orphans or people without food or housing. In 2016, we created the Zakat Fund of NYC.

Our parents’ generation, which immigrated here, were mostly fulfilling their Zakat by giving back to the countries they came from, such as Nigeria, Pakistan, and Bangladesh. But as Muslims who were born here and live in New York, we feel a deep connection to the community we live in and want to make sure we can positively impact it.

Board members of the Zakat Fund of NYC clockwise from top: Sarah Khan, Sameer Shamsi, Khadija Siddique, Samir Malik, Saara Hafeez, Nadia Sandozi, and Nazar M. Khan. Photo by Casey Kelbaugh

By partnering with The New York Community Trust, the Zakat Fund has efficiently and effectively distributed over \$370,000 worth of grants since 2018 to nonprofits that provide food and housing programs and support domestic violence survivors.

With The New York Community Trust, the Zakat Fund of NYC is able to put the dollars to work in ways that are responsible and appropriate. The Trust was the perfect fit for us.

I am proud that in times of crisis and moments of need, we are able to tap into the giving potential of our community and help those who can use it most.” ■

Alice Wimpfheimer

MS, RDN, CDN
Nutrition and Dietetics Specialist
Centenarian
Trust Legacy Society Member



“Before we had to flee Hitler’s persecution, our Jewish family was prospering in Germany. My father Eugen was a third-generation owner of a malt factory. He was passionate about his work and grew the company to be one of the largest suppliers to breweries in the country. My mother, Clémence, was Swiss, and longed to see the world, though her options were limited because she was a woman.

In 1939, my mother, with her Swiss heritage, and I immigrated to New York on the SS Manhattan while my father stayed back. He joined us later when he could obtain a visa as a German citizen through Cuba. I was 15 years old when we moved into the Bolivar Hotel on the Upper West Side. It’s a co-op now, and while I’ve traveled the world, I’ve been able to call the Bolivar homebase for 85 years.

I’ve always loved to cook and received a cooking badge as a girl scout in Switzerland. As a result, I make a very good schnitzel. And so, my love of food, and my belief that no one should go hungry, drove my life-long dedication to advancing nutrition around the world. We must think and act as a global society and learn from each other. My mantra is ‘collaboration rather than duplication.’ Food and music go a long way toward building intercultural understanding.

Throughout my career, I have funded and led various nutrition projects through the International Confederation of Dietetics Associations and through the Academy of Nutrition and Dietetics. I founded the Wimpfheimer-Guggenheim Fund for International Exchange in Nutrition, Dietetics, and Management, which funds scholarships that brought students from more than 20 coun-



Top: Alice Wimpfheimer on the roof of the Bolivar. Above: Alice with photos of her parents, who her fund is named in honor of. Photos by Casey Kelbaugh

tries to study in the U.S. so that they can better fight hunger and malnutrition in their home countries.

But my fund in The New York Community Trust has little to do with food. The fund will honor my parents and the things they cared about, including efforts that foster understanding between Jews, Christians, and Muslims, which is work we need to do now more than ever.” ■

Give with Others.

The New York Community Trust makes giving with others easy. You can be part of a giving circle, collaborate with other funders to pool resources and tackle local issues, or you can simply donate and let Trust staff match your generosity with high-impact nonprofits meeting urgent needs. ■



Community Needs Fund

Help dozens of nonprofits with one gift

Our Community Needs Fund is a fast and easy way for you to directly support dozens of nonprofits tackling pressing issues of the day across our region.

In 2023, caring individuals, families, and foundations helped us use this fund to make grants that otherwise would not have been possible. As over 100,000 migrants arrived in the region, these grants supported projects that provided newcomers with emergency relief and prepared high schools to meet the needs of newly arrived students. Our Community Needs

Fund also supported a range of other crucial projects, from advancing a campaign to legalize overdose prevention centers to helping CUNY community colleges prepare unemployed New Yorkers for jobs in high-demand sectors.

We accept contributions to our Community Needs Fund all year round. You can give any amount, and if you have a fund with us, you can make a transfer using our donor portal, MyGrants. You also can make a Qualified Charitable Distribution from your IRA, among other ways to give.



Giving Circles

Join with others to make a bigger impact

At The Trust, we believe in the power of communal giving. By giving together, we can learn more about the nonprofits that make our world better and the issues they are addressing. And we can do this while meeting new and inspiring people. Participating in a giving circle

is simple. If there is an issue you'd like to work with others to fund, such as education or climate change, let's talk!

We can help you start a new giving circle or join one of our existing giving circles.



Collaborative Funds

Unleashing the power of pooled resources

Bringing grantmakers together to make transformative change is one of our specialties. For more than 40 years, we've created a collaborative space to consolidate resources and expertise so we can tackle the biggest, toughest challenges at the appropriate scale.

A great example of this work is the Mosaic Network & Fund, which was created in 2018 to direct more resources to arts groups that are led by, created for, and accountable to African, Latin, Asian, Arab, and Native American people. This network of 200 organizations, which inspired similar efforts in other cities nationwide, is now spinning off from The Trust to become independent.

In 2023, The Trust also managed these other funder collaboratives: All for the East End Fund, Fund for New Citizens, Good Neighbors Initiative, GoVoteNYC, Long Island Civic Engagement Fund, Long Island Immigrant Children's Fund, Long Island Racial Equity Initiative, Long Island Sound Stewardship Fund, New York City Workforce Development Fund, New York State Census Equity Fund, and Westchester Workforce Fund.

Photo courtesy of **Brooklyn Book Bodega**, a Wellmet Philanthropy grantee that holds free outdoor events where kids can select books to take home. Wellmet is a women-led giving circle in The Trust that supports emerging New York City nonprofits.



How We Can Help Your Clients.

“Helping clients become effective philanthropists is an incredibly rewarding part of my job. That’s why I partner with The New York Community Trust.”

– Patricia Marcin, Esq., Rivkin Radler LLP

Are your clients doing estate planning? Selling a business? Exercising stock options? Managing an inheritance? Looking to save on taxes? Dealing with a family foundation? We can help.

As the community foundation for New York, Long Island, and Westchester, we work with professional advisors, providing strategic counsel and helping integrate philanthropy into their tax planning, family office, or estate plans.

To Have a Private Foundation or Not. That is the Question ...

For those looking to minimize administrative overhead and maximize charitable impact, a fund (or funds) at The New York Community Trust can be a sound alternative to a private foundation. If your client already has a foundation that they are thinking of winding down, they might consider moving the assets to a charitable fund at The Trust. Your client can continue to drive the grantmaking during their lifetime, and we can carry on their legacy after they are gone. ■

Contact Us to Discuss Your Clients’ Charitable Legacies

We can provide information about our fund types, suggested wording to help draft the gift instrument, and more.

General Counsel Carrie Trowbridge

(212) 686-2563
ctrowbridge@thenytrust.org
www.thenytrust.org/advisors

Christina Jonathan

Jaspan Schlesinger Narendran LLP
Long Island Community Foundation
Advisory Board Member

“As an estate planning attorney, I’m seeing two trends emerge among my clients. A growing number have successful adult children and feel like they don’t need to pass on their assets to the next generation. I’m also working with more clients who don’t have children and are planning to make a legacy gift. In both cases, I often refer them to The New York Community Trust.

For the past three years, I’ve had a wonderful experience working with The Trust through its Long Island Advisory Board. The Trust knows the obstacles many Long Islanders face and shares information with my clients about the many ways they can help.

Whatever causes my clients are passionate about—from cancer research to the arts to homelessness—The Trust can help them find high-performing nonprofits that connect with their interests. By starting a fund dedicated to issues they care about, my clients know their gifts will make the greatest impact long after they have passed away. Establishing this type of legacy is what they hope to achieve.

As The Trust approaches its 100th anniversary, it has proven itself to be a trustworthy organization and a champion for New Yorkers everywhere, and this makes me feel more confident to recommend them to steward my clients’ gifts.” ■



Portrait of
Christina Jonathan
by Casey Kelbaugh

Meet The Trust's Leadership.

Twelve dedicated New Yorkers—selected for their judgment, integrity, and understanding of philanthropic needs—serve as both the Distribution Committee of The Trust and the Board of Directors of Community Funds, Inc., our nonprofit corporate affiliate.

Six are nominated by civic authorities: the Mayor of New York City; the Chief Judge of the U.S. Court of Appeals for the Second Circuit; the chairpersons of Lincoln Center for the Performing Arts, the Partnership for New York City, and the New York Academy of Medicine; and the president of the City's Bar Association. The Distribution Committee selects six additional people to serve. The Committee meets five times per year. ■

Photos by Casey Kelbaugh

Consulting Members

Consulting Members continue to provide guidance to The Trust after their service on our Distribution Committee.

Roger J. Maldonado
Anne Moore, M.D.
Valerie Peltier (as of January 2024)
Jason H. Wright

In Memoriam: Robert M. Kaufman,
Vice Chairman Emeritus, who served with
distinction from 1987 to 2024.



Jamie Drake, Chair
 Board chair as of 1/1/2024

Founder and Principal, Drake/Anderson; Member: Parsons The New School for Design Board of Governors; Chairman, Alpha Workshops; Trustee, Kips Bay Boys & Girls Club; Historic House Trust of New York Directors' Council; Fellow, American Society of Interior Designers; Interior Design Hall of Fame, Architectural Digest AD100 Hall of Fame; Elle Décor A-List; Former Co-Chairman, Furnish-a-Future Industry Committee.



Fernando A. Bohorquez, Jr.

Partner, BakerHostetler; Board Member: Conflicts of Interest Board of the City of New York, LatinoJustice PRLDEF, Council of Urban Professionals; former Board Member: Fund for Modern Courts, Limon Dance Foundation; former Chair, NYS Bar Committee on Civil Rights; former Secretary, NYC Bar Committee on Pro Bono. *Nominated by the President of the Association of the Bar of the City of New York.*



Kevin R. Byrne

Chair, New York Community Trust Investment Committee; Board member and Chair of Finance Committee for Symetra Financial Corporation. Former Chief Executive Officer of Pacific Global Asset Management; Former Executive Vice President and Chief Investment Officer of AXA Equitable Life; former Board Member: Equitable Foundation, Project Reach Youth.



Bruce M. Holley

Managing Director, Alvarez & Marsal; former Senior Managing Director, Accenture; former Senior Partner & Managing Director, The Boston Consulting Group. *Nominated by the Co-Chairs of the Partnership for New York City.*



Obaid (Obi) Z. Khan

Chief Financial Officer, Tishman Realty; former Member, Merrill Lynch Capital Markets Group; Member: Urban Land Institute, the Real Estate Roundtable, New York Hospitality Council.



Jane E. Salmon, M.D.

Collette Kean Research Chair and Director, Lupus and APS Center of Excellence at Hospital for Special Surgery; Associate Dean, Faculty Affairs and Professor of Medicine at Weill Cornell Medicine; Member: National Academy of Medicine, Board of Scientific Counselors of National Arthritis and Musculoskeletal and Skin Diseases; Board member, Jerome L. Greene Foundation. *Nominated by the New York Academy of Medicine.*



Valerie Peltier, Former Chair Board chair through 12/31/2023

Managing Director, Tishman Speyer; Vice Chair of the Board and Chairman of the Buildings and Grounds Committee, American Museum of Natural History; Trustee, City Harvest; former Board Member: Visiting Nurse Service of New York, Harvard College Fund Executive Committee.



Mali Sananikone Gaw

Private Investor; Founder, Phoenix Collective Fund; Co-Founder: Lincoln Center Family Council, Lincoln Center Kids, Lincoln Center Students Arts Council, Young Patrons of Lincoln Center; Member: Asian Art Circle, Guggenheim Museum; former Board Member, Jewish Community Project Downtown; former Board Chair, Metropolis Ensemble.



Stephen C. Robinson

Former U.S. District Judge; former Partner, Skadden, Arps, Slate, Meagher & Flom LLP; former U.S. Attorney for the District of Connecticut; former Assistant U.S. Attorney for the Southern District of NY; Trustee: Lincoln Center for the Performing Arts, Cornell University, Weill Cornell Medicine; Independent Director: FTI Consulting and Dycom Communications.

Nominated by the Chief Judge of the U.S. Court of Appeals for the Second Circuit.



Barron (Buzz) Tenny

Former Executive Vice President, Secretary, and General Counsel, Ford Foundation; Board Member, Orchestra of the Americas; Member: Ford Foundation International Fellowships Program Advisory Council, Youth Communication Advisory Board.



Judith O. Rubin

Chairman: Playwrights Horizons, Theatre Communications Group's National Council for the American Theatre; Trustee: Mount Sinai Health System and Chairman, Committees on Quality, American Theatre Wing, Laurents/Hatcher Foundation, Collegiate School, Verse Video Education; Member, Tony Awards Administration Committee; former President and Chairman, 92NY.



Ann Unterberg

Trustee: New Victory/New42, Bruce Springsteen Archives & Center for American Music; Vice Chair & Trustee, Monmouth Medical Center; former Chair: Lincoln Center Education, NARAL Pro Choice America Foundation, Two River Theater Company; former President, Grand Street Settlement; former Senior Vice President, L.F. Rothschild, Unterberg, Towbin. *Nominated by the Chairman of Lincoln Center for the Performing Arts.*



Advisory Boards.

The following dedicated Long Islanders and Westchester residents serve as trusted advisors and provide guidance on local issues. ■

Long Island Advisory Board

Patricia Marcin, Chair
Rivkin Radler, LLP

Marc Wong, Vice Chair
UBS The Empire Group

Natalie Abatemarco
Philanthropist

Robert Barnett
Capell Barnett Matalon &
Schoenfeld, LLP

John DeCelle
Nassau Financial Federal
Credit Union

Nancy Engelhardt
Nancy Engelhardt, LLC

Christina Jonathan
Jaspan Schlesinger Narendran LLP

James Meyer
Planned Giving Solutions

Edward Palleschi
First Long Island Investors, LLC

Westchester Advisory Board

Sarah Jones-Maturo, Chair
RM Friedland

Hon. Jared Rice, Vice Chair
New Rochelle City Court

Anthony Bailey
Bailey Initiative

Jennifer Cruz, Ph.D.
Wellbeing and Psychological
Services LLC

Daniel de Menocal
Retired, BNY Mellon Capital Markets

Millie Hernandez Becker
SkyQueen Realty

Andrew Herz
Patterson Belknap Webb &
Tyler LLP

Marjorie Hsu
Marjorie Hsu Advisory, LLC

Antoinette Klatzky
Eileen Fisher Foundation

Moira S. Laidlaw
Falcon, Rappaport & Berkman LLP

Ginny Loughlin
AppliedGood, Inc.

Ruth Suzman
Philanthropist

John Tolomer
Valley Bank



Long Island advisory board members from L to R: Robert Barnett, Vice Chair Marc Wong, Christina Jonathan, and James Meyer. Photo by Casey Kelbaugh

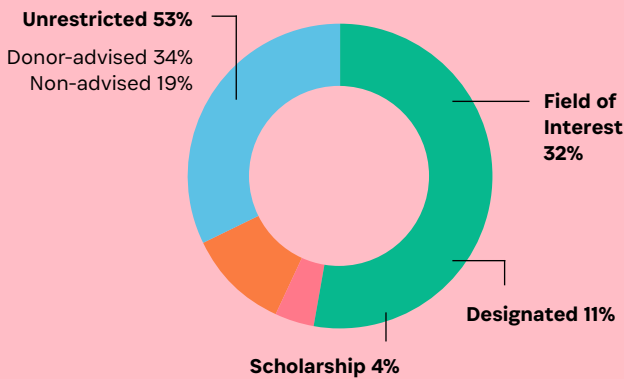


Our Westchester advisory board, staff, and donors visit grantees in Ossining. From L to R: Westchester Executive Director Laura Rossi and Chair Sarah Jones-Maturo and Village of Ossining Mayor Rita Levin. Photo courtesy of C&A Digital

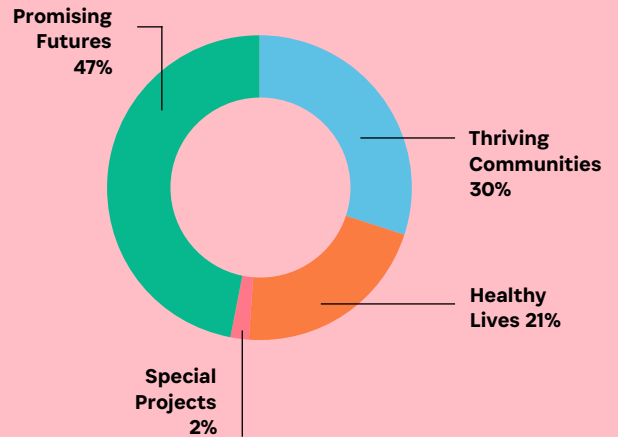
Highlights from 2023.

Unaudited financial highlights for 2023 are shared here.

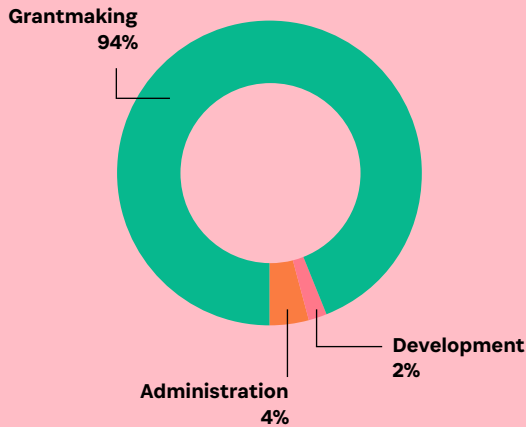
Total assets by fund type: \$3.3 billion



Grants by program area: \$194.7 million



Total expenditures: \$215.2 million



The independent auditor's report will be posted on our website in July 2024, accessible via this QR code.



Trust grantee **Groundwork Hudson Valley** engages Westchester young people in efforts to remove invasive species and help maintain greenspaces, such as Harbor Island Park, seen here. Photo by Casey Kelbaugh

Investing for the future.



We work with donors to select investment options that are appropriate for their grantmaking objectives.

Our financial staff is guided by dedicated, seasoned investment professionals who volunteer countless hours as members of our Investment Committee.



Investment Committee

Kevin R. Byrne

Committee Chairman, Distribution Committee Member, The New York Community Trust; Retired CEO of Pacific Global Asset Management, Pacific Life Insurance Co.

Chris Acito

Founder, CEO and CIO, Gapstow

Elizabeth B. Dater

Retired Managing Director, Angelo, Gordon & Co.

Amy Freitag

President, The New York Community Trust

Farzine Hachemian

President and COO of Caravela Energy Partners LP

Patricia M. Haverland

Retired Vice President and CIO, Siemens North America Pensions

Rosemarie Liu Shomstein

Retired Senior Vice President and Deputy CIO, AXA Equitable Life Insurance Co.

Left: Young people shoot hoops on the roof of **Brotherhood Sister Sol's** new headquarters in Harlem. A 2023 grant supported a youth-led organizing program for Black and Latinx young people. Photo by Casey Kelbaugh

Financial information about The New York Community Trust can be obtained by contacting us at: 909 Third Avenue, 22nd Floor, New York, New York 10022, (212) 686-0010, at www.thenytrust.org, or as stated below:

Florida: SC No. CH9514 A COPY OF THE OFFICIAL REGISTRATION AND FINANCIAL INFORMATION MAY BE OBTAINED FROM THE DIVISION OF CONSUMER SERVICES BY CALLING TOLL-FREE, WITHIN THE STATE, 1-800-HELPFLA OR AT www.FloridaConsumerHelp.com REGISTRATION DOES NOT IMPLY ENDORSEMENT, APPROVAL, OR RECOMMENDATION BY THE STATE. Maryland: For the cost of postage and copying, from the Secretary of State. Michigan: MICS No. 22265. Mississippi: The official registration and financial information of The New York Community Trust may be obtained from the Mississippi Secretary of State's office by calling 1-888-236-6167. New Jersey: INFORMATION FILED WITH THE ATTORNEY GENERAL CONCERNING THIS CHARITABLE SOLICITATION AND THE PERCENTAGE OF CONTRIBUTIONS RECEIVED BY THE CHARITY DURING THE LAST REPORTING PERIOD THAT WERE DEDICATED TO THE CHARITABLE PURPOSE MAY BE OBTAINED FROM THE ATTORNEY GENERAL OF THE STATE OF NEW JERSEY BY CALLING (973) 504-6215 AND IS AVAILABLE ON THE INTERNET AT <http://www.state.nj.us/lps/ca/charfrm/htm>. New York: A copy of our most recent financial report is available from the Charities Registry on the New York State Attorney General's website at www.charitiesnys.com or, upon request, by contacting the NYS Attorney General, Charities Bureau, at 120 Broadway, New York, NY 10271 or at 212-416-8401. North Carolina: Financial information about this organization and a copy of its license are available from the State Solicitation Licensing Branch at (888) 830-4989 (within N.C.) or (919) 814-5400 (outside N.C.). Pennsylvania: The official registration and financial information of The New York Community Trust may be obtained from the Pennsylvania Department of State by calling toll-free, within Pennsylvania, 1-800-732-0999. Virginia: From the State Office of Consumer Affairs in the Department of Agriculture and Consumer Affairs, P.O. Box 1163, Richmond, VA 23218. Washington: From the Charities Program at 1-800-332-4483, or www.sos.wa.gov/charities. West Virginia: West Virginia residents may obtain a summary of the registration and financial documents from the Secretary of State, State Capitol, Charleston, WV 25305. Wisconsin: A financial statement of the organization disclosing assets, liabilities, fund balances, revenue and expenses for the preceding fiscal year will be provided to any person upon request. CONTRIBUTIONS ARE DEDUCTIBLE FOR FEDERAL INCOME TAX PURPOSES IN ACCORDANCE WITH APPLICABLE LAW. REGISTRATION IN A STATE DOES NOT IMPLY ENDORSEMENT, APPROVAL, OR RECOMMENDATION OF THE NEW YORK COMMUNITY TRUST BY THE STATE.

The Trust Legacy Society

Members of our Legacy Society support the causes they care about in perpetuity.

Their charitable goals are as diverse as the people of our region, but they're linked together by their desire to create a better world for generations to come.

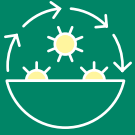
All donors who provide for permanent funds at The Trust, whether through wills, trusts, or beneficiary designations, or who commit to leave a balance in their existing donor-advised

funds to support our work, are invited to join. Here are members who've joined during their lifetimes. In the Funds list in the back of the book, you'll find permanent funds whose founders we also count as members of the Legacy Society. If you have included The New York Community Trust in your will or estate plans, or are considering doing so, we want to honor you in our Legacy Society. Contact us at (212) 686-0010 or giving@thenytrust.org.

Lifetime Members

In addition to those listed here, 168 members of the Legacy Society wish to remain anonymous. *Deceased members are italicized.*

Anonymous Land Preservation Fund	Suzanne & Kenneth Feustel	Debra Lobel & Beverly Dash	Peter Rugg & Meredith Phelps Rugg
Donald Albrecht	Helena Figuereida	Sara Lukinson	D. Nicholas Russo
Steven Baum	Charlotte Fischman	Lester Lyons	Salvatore Saia
Carole Berger	Desmond G. FitzGerald	Susan Madden	<i>Dr. James Scheuer</i>
Steven D. & Amy Blecher	Clemtina Santi Flaherty	Roger Juan Maldonado	Marilyn Schulman
Helene Blieberg	Dan Franklin	<i>Ann M. Mallouk</i>	Kathy Shea
Barbara H. Block	Amy Freitag	Lucia Maloney	Diane & Jonathan Shoemaker
Deborah T. Bloom	Joseph French Jr.	Francis Joseph Mandracchia	Anne P. Sidamon-Eristoff
Peggy Blumenthal	Patricia Galteri	Julie Maner	Lorie Slutsky
Marcy Brownson	Joseph Gelband	Patricia C. Marcin	Ann Barringer Spaeth
Richard Burgheim & Ricki Fulman Nelsen	Rita Gilbert	Jan Mardfin	<i>Edward W. Stack</i>
Judith I. Byrd	Charlynn W. Goins	<i>Michael Margulies</i>	<i>Pearl (Freddie) Staller</i>
Stephen & Emily Cahnmann	Robert Goldfarb	Stuart & Victoria Marwell	Nathaniel Stern
John Campbell	Gail Gordon	Lane Maurer	Samantha and Christopher Storkerson
James Caras	Gloria & Dick Grafer	<i>Charlotte Mayerson</i>	Dorothea H. Swope
Claire & Joseph Cohen	Mary Greenebaum	Kerry McCarthy & Kate Mann	Estelle Newman Tanner
Ernest J. Collazo & Denice M. Collazo	Edmund Grossman	Edward F. McGinley, III	Barron & Ursula Tenny
Adam Collik	Etta Gumbs	James R. McKinney	Ruth & Spencer Timm
David M. Conte & Suzanne C. Ouellette	Gregory Hayden	Kate McLeod	Starr Tomczak
Daniel I. Cotlowitz	Rena Hershberger	Karen Metcalf	Janice & Meldon Tucket
Anne-Claude Cotty	Karen Hirsch	Earl and Ruth Miller	Judith E. Turkel & Jennifer L. Costley
John E. Covington	T Lance Jackson & Beverly Green	Natalie Moore	Ann & Thomas Unterberg
Petra Danielsohn & Ana B. Salgado	Pat Jenny & Kent Hiteshaw	Robert Nardone	Nancy Wackstein
Marie D'Costa	Doug Jones & John Sanger	Michele & Raffiq Nathoo	Lulu C. Wang
Joseph Arena & Thomas D'Eletto	<i>Robert M. Kaufman</i>	Christopher Norwood	Roxanne Warren
Joan Delfino	Kevin Kellogg & Stewart Pearce	Barry Olmezer	Helen P. Wiley
Diana Diaz	Allen Kleinman	Nicholas Opinsky	<i>Richard & Linda Willett</i>
Teresa & Edward Dillon	Joan Kligman	Beverly S. Oppenheim- Patterson	Barbara & Douglas Williamson
William W. Donnell	<i>Barbara Korman</i>	Michael & Deborah Parrella	Alice Wimpfheimer
Marsha Sheila Dorin	Patricia Larson	Valerie S. Peltier	Suzanne Dyer Wise
Jamie Drake	Judith Lavenberg	Marietta Poerio	C. Theodore Wolf & Frank X. Decolator II
Jackie Dunbar	<i>William Kam-Sheung Lee</i>	Samuel S. Polk	Amy Wolf
Barbara Dzubak	Sherry Lehman	Stanley Pottinger	Melinda B. Wolfe & Kenneth D. Inadomi
Karen Ehrlich	Jill Leinbach & Lisa Huertas	Wendy Price	Marc Wong
Lita & <i>Walter</i> Elvers	Lisa LePage	Valerie & Michael Puglisi	Jason H. Wright
Hal M. Epstein	Bryan Leys and Sharon Weiss	Deborah Fish Ragin & Luther M. Ragin Jr.	
	Claire Lieberwitz & Arthur Grayzel	Charles Rosenblum	
	Chris Lipari	Judith O. Rubin	



Case Study: Power of Permanence

A legacy to help those with intellectual disabilities live full lives

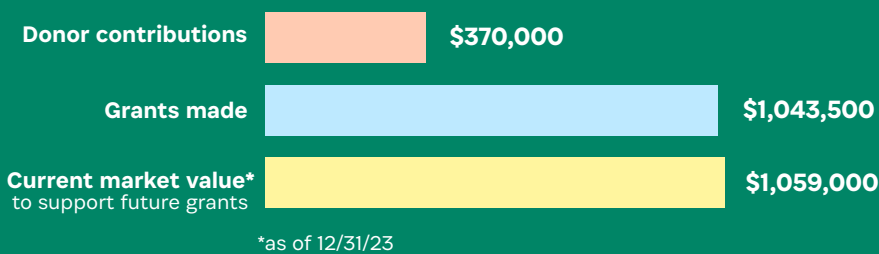
Fund Abe, Lena, and Irin Soskis Memorial Fund

Established 1984

Purpose For the prevention, treatment or research in cancer or heart disease; or to aid people with intellectual disabilities or blind persons.

Abe and Lena’s son Irin had intellectual disabilities. The couple created a fund through their will that today is improving life for others living with intellectual disabilities or blindness.

People create permanent funds in The Trust to benefit a wide range of causes and communities. The one thing these funds have in common is that they are invested for growth so they can make an enduring difference, eventually giving away more than the initial gift.



Through Trust grantee **AHRC NYC**, Ahmad Abdo works as an intern at a social services office. A grant from the Soskis Memorial Fund helped place him and other New Yorkers with intellectual disabilities in internships with city and state government. Photo by Ari Mintz





Funds in 2023.

The following is a list of funds at The New York Community Trust.

Funds in bold and with an asterisk are new. Funds that have received legacy gifts are italicized. Funds that were formerly listed at our Westchester Community Foundation and Long Island Community Foundation are integrated into this list.

- A**
- AB Charitable Giving Fund (2014)
Janice E. Abbott Scholarship Fund (1999)
Abdini Fund (2008)
Jane Schwab Abel & Elise Schwab Clemenger Memorial (1946)
Miriam G. Abramovitz Fund (2022)
Robert Abramovitz Fund (2022)
A.B.Y. Fund (1960)
ACDZ Fund (2022)
Acito-Amouzegar Family Fund (2021)
A. Bernard Ackerman Fund (2011)
Ackman Family Fund (1997)
Acorn Foundation Fund for Beautification in Memory of Barbara Foster Vietor (2004)
Acorn Foundation Fund for History in Memory of Alexander Orr Vietor (2004)
Ada Fund (2010)
John and Laurie Adams Fund (2004)
Hall Adams Fund (1972)
Adel and Leffler Families' Fund for Queens (1993)
Adelante Fund (2018)
Terry Adkins Memorial Fund (2014)
Frederica M. and Morton L. Adler Trust (1941)
Agris-Pine Family Charitable Fund (2014)
Benigno M. Aguilar and Gerald A. Erickson, Jr. Fund (2011)
Brianna Xu Aiping Fund (2014)
Akabas Family Fund (1986)
Akinla Family Fund (2018)
Barbara Albisser Memorial Fund (1981)
Alemany Family Fund (2015)
Alexander Family Fund (2022)
Oakey L. and Ethel Witherspoon Alexander Fund (1977)
All For The East End Fund (2013)
Frances E. Allen Fund for Early Childhood Education for Disadvantaged Youth (2021)
Robert Mack Allen & Wendel Fentress Ott Fund (1989)
Franz and Marcia Allina Fund (1994)
Jack & Belle Alpern Fund (2016)
B. Altman Fund (1985)
Altschul Family Fund (1980)
Emily H. Altschul Charitable Fund (2002)
Altschul Overbrook Fund (1994)
Arthur Altschul Memorial Fund (2002)
Elizabeth and Peter Altwater Fund (1974)
Amazon New York Community Fund (2021)
***Amber Klein Fund (2023)**
American Seamen's Friend Society Designated Fund (1986)
American Seamen's Friend Society Discretionary Fund (1986)
Iris Arinella Ames Education Fund (2015)
Robert and Rhoda Amon Fund (2008)
Jack Amster Fund (2016)
Anne Anastasi and John Porter Foley, Jr. Funds (2006)
Patricia Anderson Fund (2005)
J. R. Anderson Fund (1981)
Dennis P. Angermaier Memorial Lifeguard Scholarship Fund (2002)
Matthew and Krista Annenberg Fund (2012)
Annie Fund (1992)
- Anonymous Fund (2006)
Patricia L. Anslinger Memorial Fund (2007)
Apoyo Fund (2002)
Aquamarine Fund (2014)
Arc of Circumstance Fund (1978)
***Joseph Arena and Thomas D'Eletto Fund (2023)**
***Joseph Arena and Thomas D'Eletto Opportunity Fund (2023)**
Joseph Arena and Dr. Thomas D'Eletto Charitable Fund (1995)
The Arfa-Bernstein Family Fund (1997)
Arman Fund (2015)
Walter & Marsha Arnheim Fund (1986)
Esther Jean Arnhold Scholarship Trust (2017)
Michael and Christine Arnouse Family Fund (2009)
Aronian Family Fund (2008)
Arts and Creative Expression Fund (2017)
Arts Reach Fund (2014)
Arundel Fund (1988)
Ascher Family Fund (2021)
Sol and Lillian Ash Fund (2015)
Linda Asher Fund (2001)
Marcia Ashman Fund for Children (1999)
Larry Ashmead Editorial Award Fund (2010)
Michael J. Ashworth Fund (2012)
Robert R. Asiel Memorial Funds (1972)
Winifred A. Aste Fund (2011)
Astor Fund for Public School Libraries (1997)
The Brooke Astor Funds for New York City Education (2012)
ASW Fund (2007)
ATS-1 Fund (2010)
Michael Avery Social Justice Fund (2012)
- B**
- Babsan Fund (1992)*
William M. Backer Fund (1985)
Henry Bowman Backer Fund (2021)
Backman-Niesz Fund (1999)
Isabelle Bacon Fund (1985)
Ellen & Henry Baer Fund (1986)
Honorable Harold Baer & Dr. Suzanne Baer Fund (1989)
Lee Bailey Fund (1991)
S. Prentiss Bailey Fund (1960)
Baird Family Fund (1987)
Allyson Maya Collazo Baker Fund (1984)
Baker Family Fund (2003)
Baldwin Family Fund (2011)
Alexander Baldwin Memorial Scholarship Fund for Massapequa High School (2000)
Suzanne Bales Memorial Fund (2016)
Fern Ann Ballard Memorial Fund (1986)
***Barbara D. Bannister Fund (2023)**
Dr. Holly M. Bannister and Douglas L. Newhouse Fund (1984)
Barbara Jane Fund (2019)
Peleg S. Barber Fund (1960)
Bardel Family Fund (2007)
Ruth Plofsky Barish and Irving Barish Fund (1996)
Barns Fund (1971)
Parker W. Barnum Funds (1979)
- Janet & John Barone Charitable Gift Fund (2015)
Laurinda Barrett Fund (2022)
Barringer-Spaeth Fund for Change (2002)
William and Françoise Barstow Foundation No. 1 (1931)
William and Françoise Barstow Foundation No. 2 (1959)
Joan Bartels Memorial Fund (1997)
Christopher S. Bartels Fund (1998)
Katherine N. Bartels Fund (1998)
McDonald C. Bartels Fund (1998)
Todd C. Bartels Fund (1998)
Harriett M. Bartlett Funds (1987)
Arthur L. Baruch and Rosalie K. Baruch Fund (1979)
Paul Ludwig Baruch & Aimee Mayer Baruch Fund (2008)
Phyllis J. Bass Memorial Fund (2021)
Conor Bastable Charitable Fund (2010)
Baudo-Sillerman Scholarship Fund (1989)
***Carol and Lester Bauer Memorial Scholarship Fund (2023)**
B, D & J Fund (2022)
Alice D. Beal Trust (1955)
Bear Stearns Award (2008)
Raymond R. Beatty Scholarship in Memory of Andrew Wilson (1984)
Hubert Park Beck Literacy Fund (2004)
Bernadine Becker Commemorative Trust (1984)
C. Richard Becker Fund (2019)
Ruth Bedford Fund (1963)
Beech Fund (1975)
***The Benjamin Beinecke Family Fund (2023)**
Thomas D. Bell Charitable Fund (2012)
David A. and Gail G. Bell Fund (2012)
Bellevue Nursing Committee Fund (1976)
Jean Bellia Fund for Nursing Excellence (2004)
Bell-Jacoby Family Fund (2015)
Eleanor Robson Belmont Fund (1980)
Selim and Luna Benardete Charitable Fund (2012)
Beverly Bender Fund (2000)
Lillian Z. Bender Fund (2002)
Bendheim-Von Wiskow Fund (2010)
Howard and Grace Benedikt Fund (2002)
Claire B. & Lawrence A. Benenson Fund (1987)
Herbert and Edythe F. Benjamin Fund (1976)
Karen Benner Family Fund (2014)
Michael Benner Family Fund (2006)
B. Bentele's Fund (2015)
Bentham Fund (2018)
***Philip Bentley & Michele Ferez Fund (2023)**
Bento Fund (2004)
Maureen Duffy Benziger Fund (2005)
Berelle Fund (2009)
Andrew N. and Gail D. Berg Fund (1999)
Berg Family Fund (2022)
Carol Berger Scholarship Fund (2005)
Berger Family Memorial Fund (2008)
Berger Memorial Fund (2008)
Edward Bergman Fund (2005)
Paul Bergman Fund (2005)
Sarah and Paul Bergman Youth Empowerment Fund (2005)
Sharon & Edward Bergman Charitable Fund (2008)
Lancelot M. Berkeley Fund (2007)
Richard A. Berman Fund (2004)

Willa and Robert Bernhard Fund (1997)
Charles L. Bernheimer Fund (1924)
 Theresa E. Bernholz Fund (1924)
 Sylvia Bernstein Fund (1994)
William H. Berri Funds (1966)
 Besemer Family Fund (2012)
 Bethlehem Fund (2018)
 Betlor Foundation Fund (1978)
 Beverly Hills Fund (1972)
 BGM Fund (1971)
 Anil and Pandora Po Bharvaney Fund (2012)
 Dr. Raj Bhayani Fund (2013)
 Melanie S. Bialis Fund (2007)
 K. M. Bialo Family Fund (1986)
 Bianco Family Fund (2003)
 Biazar Fund (2022)
 Philip A. and Carol Bilotti Fund (2010)
 Peter R. Bingenheimer Charitable Fund (2022)
June R. and Jonathan Bingham Fund (1980)
 Binswanger-Charlton Family Fund (2019)
 Henry Birnbaum Fund (2000)
 Gladys A. Bishop Memorial Fund (1987)
 Blackwell Fund (2013)
Richard & Margaret Blanchard Fund (1983)
 Nancy & Robert S. Blank Fund (2003)
 Michael Blank Memorial Fund (2010)
 Blecher Family Fund (1986)
 Helene Blieberg Fund (2015)
 The Blitzer Fund (1984)
 Blitzer Family Fund (2005)
 Amy Bloch/Gregory Horowitz Fund (2005)
 Block Island Fund (2016)
 Albertina Bloom Memorial Fund (1985)
 Allan Bloom Memorial Fund (2022)
 Samuel and Beatrice Marks Bloom Memorial Fund (1998)
 Lida and David Bloom Fund (1989)
 Robin Bloom Fund (1991)
 Blue Whale Charitable Fund (2022)
 Blum Family Fund (1990)
 Sidney and Elaine Blumenthal Fund (1980)
 Peggy Blumenthal Fund (2019)
 Blumer Family Fund (1998)
 Jesse Smith Blydenburgh & Josephine Vail Blydenburgh Fund (1958)
Ernst P. Boas Memorial Fund (1955)
 Boas Family Fund (2018)
 Robert S. Bobrow Charitable Fund (2019)
 Bodie's Blue Sky Fund (2017)
 Alice Boerner Fund (1988)
 Bohemia Fund (1971)
 Bolin Fund (1986)
 Peter A. Bonanni Scholarship Fund (1996)
 Bond Vet Community Fund (2022)
M. Alida Bonyngre Memorial Fund (1940)
Lillian G. Booth Fund (1976)
 Janet and James Bostany Memorial Fund (1999)
Charles Bouman Charitable Trust (1977)
 Bove Fund (1986)
 John Perry Bowditch Memorial Fund (1956)
 Susan Bowen Fund (2018)
Thomas F. Bowen Fund (2018)
Clothilde de Veze Bower Fund (1989)
 Box of Rain Fund (2021)
 George T. and Francele Boyer Fund (1976)
 Blair A. and Elizabeth J. Boyer Family Fund (2006)
Sandra S. Branch Fund (2021)
 Brandy Valley Fund (2019)
 Barry and Geraldine Brause Fund (1986)
 R. S. Brause Fund (1986)
 Roberta Brause Fund (1986)
Annie Grant Breath Memorial Fund (1939)
 Jack Brennan Fund (2002)
 Briar Patch Fund (2012)
 Brivio Family Fund (2003)
Broadberry Fund (2021)
 Beatrice and Douglas Broadwater Fund (1986)
 Robert W. Brooks, M.D. Fund (2018)
 J. Frank & Susan S. Brown Family Fund (2012)
 Meredith & Sylvia Brown Fund (2004)
 James D. Brown Jr. Fund (2012)
 Nikki Brown Fund (2011)
 Adon H. Brownell Memorial Fund (1985)
Edward W. Browning Fund (1969)
 Brownstein Family Fund (1995)
 William H. and George R. Brunjes Memorial Fund (1988)
 John and Josephine Bruno Memorial Fund (2011)
 Michael Bruschini Charitable Fund (2022)

May Evans Bryant Fund (1989)
 BTW Fund (1973)
Emily G. Buck Fund (1994)
 Bucks Harbor Fund (2006)
 David A. Budd Fund (2008)
 Buenger Fund (2001)
 Alexandru and Sonia Bunescu Fund (1993)
 Walter and Martha Burchard Family Fund (1988)
 Burford Fund (2007)
 Richard A. Burgheim Fund (1999)
 Mary Griggs Burke Fund (2017)
***Brian Burke Memorial Fund (2023)**
Burkhart Fund (2004)
Frantzes D. Burkhart Fund (2004)
William H. Burkhart Fund (2004)
 C.D. Burns Fund (2008)
John U. and Minnie M. Burt Inter Vivos Fund (1974)
John U. and Minnie M. Burt Testamentary Fund (1974)
 Ernest Brooks Burton Fund (2003)
 Elizabeth G. Butler Angel's Fund (2005)
 Donald G. Butt Legacy Fund (2022)
 William B. Butz Memorial Fund (1999)
 Judith Byrd Fund (2009)
 Monsignor Harry J. Byrne Scholarship Fund (1998)
 Patrolman Edward R. Byrne Substance Abuse Fund (1988)
 Kevin and Maura Byrne Family Fund (2016)

C

Hans and Ruth Cahnmann Family Fund (2009)
***Catherine H. Cahnmann Fund for Animal Welfare (2023)**
 Ruth and Hans Cahnmann Memorial Fund (2012)
Jean C. Caldwell Fund (1950)
 Patricia A. Caldwell Fund (2002)
***Calise Family Fund (2023)**
 Callisto Fund (2014)
 Callisto-T Charitable Fund (2016)
 Calman Fund (2007)
 Bruce & Marjorie Calvert Family Fund (2000)
 Camp Edith Macy Fund (1926)

Frances T. Campbell Fund (1959)
 Cane Nowak Family Fund (2014)
 Henry Cannon Fund (1981)
 Capozzi Family Fund (2016)
 Richard M. Caproni Memorial Scholarship Fund (2001)
***Care Coordination Fund (2023)**
 Carillon Fund (1998)
 Carlson Fund (1994)
 Arnold W. and Alice R. Carlson Charitable Fund (2015)
 Tony Carlucci Scholarship Fund (1999)
***Philip Carlucci Charitable Fund (2023)**
 Carmans River Watershed Management Fund (2014)
 Carnegie Corporation Funds No. 1 & 2 (1936)
 Carnoy Family Fund (2012)
 Ms. Carol Aim High Fund (2016)
 Carolina Fund (1986)
 Alys Sinclair Carreau Memorial Fund (1929)
 Jesse L. Carroll, Jr. and Judith B. Carroll Fund (1986)
 Kent E. Carroll Fund for Young Writers (2022)
 Alexandra Peterson Cart Foundation Fund (2012)
 Sybil Carter Memorial (1930)
 Cashin Family Fund (1989)
 Bonnie Cashin Fund (2002)
 Castilian Fund (2016)
 Castilian Theatre Production Fund (2022)
 Cecelia Trust Fund (1996)
 Cecil-Michael Family Charitable Fund (2022)
 Barbara and Walter Ceconi Charitable Fund (2008)
 Cedar Chest Fund (2016)
 Cela-Trowbridge Family Fund (2021)
 Helene & Richard Cepler Family Fund (2000)
 CFDA-Vogue Initiative/New York City AIDS Fund (1991)
 Chadwick Fund (2015)
 Chakiryam Family Fund (2002)
 Ricky Chalifoux Memorial Fund (2021)
 Changemakers Fund (2019)
 Maria Bowen Chapin Scholarship Fund (2005)
 Arthur A. Chaplin GSB Fund (2001)
 Charity Society Fund (2000)
 Charles Family Fund (2022)



She Lived Modestly, Dedicated to Helping Others

Alma Dakota Hunt

1891-1987

Alma D. Hunt/VCM L.I. Fund

(established by her grandson, T Lance Jackson)

Alma Dakota Hunt believed in a simple budgetary strategy: spend some, save some, give some away. She supported grassroots projects that helped underserved children worldwide. After her husband died in 1929, Alma was single and working for a florist in Queens when she adopted a young daughter, Myrtle. Alma passed her charitable values down to her grandson, T Lance Jackson, a retired airplane mechanic and active philanthropist who started the fund to honor her. Her fund supports Long Island programs that benefit children.

Charlie's Fund (1975)
 Charlie's Environmental Fund (2018)
 Charlie's Long Island Fund (1985)
 Gerald L. Chasin Fund (1986)
 Richard & Ellen Chassin Charitable Fund (2000)
 Chatham Fund (1984)
 Jerome Chazen Fund to Address Domestic Violence (2014)
 Patrick S. Cheng & Michael J. Boothroyd Fund (2000)
 Herbert & Phyllis Chernin Fund (1996)
 Chesler-Mallow Family (2020)
 Christiansen/Shuchman Fund (1987)
 Christie Fund (2012)
 Francis and Catherine Christy Fund (1975)
 Chrysalis Fund (2016)
 Joseph M. Cicogna Charitable Fund (2019)
 Cinci Fund (2019)
 Patricia Cirillo Charitable Fund (2012)
 Clark Family Fund (2000)
 Cameron Clark Memorial Fund (1998)
Edith M. Clark Fund (1944)
 Fenton Clark Fund (1986)
Valerie G. Clark Memorial Fund (1978)
 Cline Foundation Fund (1995)
 Clinton Community Garden Fund (1985)
 CM Fund (2016)
 CND Fund (2010)
 Coco Fund (2000)
***Suzanne Cogan Fund (2023)**
***Antoinette and Stanley Cohen Fund (2023)**
 Alice and Clifford Cohen Fund (2017)
 Claire and Joseph Cohen Legacy Fund (2013)
Helen Cohen Fund (1995)
 Lisa E. Cohen Memorial Scholarship Award Fund (1991)
 Paul T. Cohen Fund (2009)
 H. M. & T. Cohn Fund (1977)
 Larry Cole Memorial Fund (2005)
 John and Ann Coleman Fund (1984)
 Paul Rykoff Coleman Fund (2014)
 Warren Coleman Fund (1986)
 Richard M. Colgate Fund (1959)
 Faith Colish Fund (2012)
 Collazo Family Fund No. 1 (2007)
 Irene D. Colliia Trust (1980)
 Colson Fund (2006)
 Columbus Circle Fund (1976)
 Marie Colvin Memorial Fund (2012)
 Community Needs Fund (2021)
 Community Needs Fund - Westchester (2020)
 Compassion Purpose & Impact Fund (2021)
 Thomas J. Concannon Memorial Internship Fund (2006)
 George J. Conklin Scholarship Fund (1989)
 Georgianna B. Conlin Fund (1998)
Kevin P. Connors Fund (1986)
 Cook Family Fund (1986)
 Joan Ganz Cooney Fund (2010)
 Joan Ganz Cooney & Holly Peterson Fund (2015)
 Lane Cooper Fund (1960)
Gertrude Corbitt Bequest (1959)
 Stuart Cornfeld Funds (2020)
 Michael A. Correa Memorial Fund (2002)
 Corriggio Family Fund (2015)
 Ann Caroline Corrody Fund (1999)
 Barbara Fatt Costikyan Fund (1999)
 Jennifer L. Costley and Judith E. Turkel Fund (2005)
 Daniel I. Cotlowitz Fund (2016)
 Melinda and James M. Cotter Fund (1986)
 Counterpoint Fund (1996)
 J. E. Covington Fund (2007)
 CPM Fund (2007)
Valery Craane Fund (2012)
 Karen L. Cramer Charitable Fund (2012)
 Cranin Family Fund (2017)
 Critchlow/McCormick Family Fund (2012)
Charlotte L. Crittenden Fund (1932)
 A. Evelyn Cronquist Fund (1991)
Winifred Crost Fund (1981)
 Betsy M. Crump Memorial (2018)
 Charles E. Culpeper Fund (1999)
 Richard Cummings (G. Black) Fund (2016)
 Richard Cummings (W. Cummings) Fund (2016)
 Cumulus Fund (1992)
 Cumulus Long Island Fund (2003)
 Curbstone Fund (2006)
 Cushman Family Fund (2005)
 Paul and Paulette Cushman Fund (1998)
 Cutrone and Smith Family Fund (2014)

George W. Cutting, Jr. Fund (1998)
 CWR Partners Fund (2012)
 John Da Silva Memorial Fund No. 1 (1988)
 John Da Silva Memorial Fund No. 2 (1988)
 John Da Silva Memorial Fund No. 3 (1988)

D

DAL Fund (1984)
 Florence S. Daniels Fund (2012)
 Petra Danielsohn Family Fund (2016)
 Abraham L. Danziger Fund (1979)
 Ellen and Sabin Danziger Fund (1997)
 Darlington Fund (1973)
 Darlington Memory Fund (2018)
 Rose D'Arpino Scholarship Fund (2005)
 Joseph S. D'Ascoli Fund (2017)
 Elizabeth B. Dater & Wm. Mitchell Jennings Jr. Fund (1999)
***Dauntless Bloom Fund (2023)**
 Davidow Elderly Community Assistance Fund (1996)
 Davis Polk & Wardwell Fund (1997)
 Donna Scher Davis Fund No. 1 (1993)
 Donna Scher Davis Fund No. 2 (1996)
 Dawn Fund (2005)
Day Memorial Fund (1948)
 DBC Fund (2008)
 Rigau Family Fund (2020)
 Eugenia Ortuno de Bartels Fund (2002)
 David and Diane DeBell Family Fund (2003)
 Raul and Emilie de Brigard Family Fund (2021)
 G. Louise Robinson de Dombrowski Fund (1991)
 Adam de Havenon Fund (2004)
 Georgia and Michael de Havenon Fund (1986)
 Peter J. De Luca Family Fund (1991)
 Georges and Lois de Menil Charitable Fund (1977)
Jay and Ruth De Soto Mayor Fund (2004)
 Cosmo H. Guarriello and Lissa V. De Angelis Happiness Fund (2021)
 Ellen A. Dearborn Fund (1969)
 Dearing Zeiler Charitable Fund (2016)
 Richard & Barbara Debs Fund (1986)
 Deerdodds Fund (1997)
 Deering and Volpicella Family Fund (2007)
 DEL Fund (2007)
 Christina and Paul Del Balso Fund (2021)
 Delacorte Fund (1994)
Albert P. Delacorte Fund (2005)
 George Delacorte Center for Magazine Journalism Fund (1998)
George and Valerie Delacorte Fund (2021)
 Delacorte Scholarship Fund for Columbia University College of Physicians & Surgeons (2013)
Valerie Delacorte Fund (1995)
 Delafield Fund (1975)
 John and Patricia Delany Memorial Fund (2012)
 Delany Sisters Fund (1994)
 Nancy and Robert DeLigter Boy Scout Memorial Fund (1991)
 Barbara Duncan Deller Fund (2019)
 Patrick and Kara Dennis Charitable Fund (2015)
 David W. Denton U.S. Attorneys' Fund (2010)
 Derby Fund (1983)
 Michele & Concetta DeRosa Fund (2000)
 Deutsche Bank Fund (2010)
 Brooke Katherine Devine Fund (2006)
 Christopher and Bonaventura Devine Fund (2020)
 Mary Wheeler Dewart Fund (1976)
 Eugene Di Mattina Fund (2013)
 Diacre Family Fund (2003)
Hester Diamond Fund (2002)
 Dickler Family Fund for Crohn's and Inflammatory Bowel Disease (2016)
Ruth and Gerald Dickler Community Housing Fund (2016)
 Ruth and Gerald Dickler Fund for Early Childhood Education (2010)
 Ruth Crohn Dickler Legacy Fund (2016)
 DIFFA Fund (2018)
 Teresa and Ed Dillon Fund (2022)
 DJ Endowment Fund (2020)
 Dogwood Fund (1979)
 Eugene, Bridget & Tommy Dolphin Scholarship Fund (1992)

Dominican Sisters of Hope Empowerment Fund (2014)
 Susan Wells Donnell Fund (1984)
 William W. Donnell Fund (1994)
 William W. Donnell Fund for Parks (2003)
Margaret E. Donnelly Fund (2015)
 A. James Donohue Fund (1986)
 James D. Dorfman & Michael J. Herko Fund (2014)
 Percy Douglass Memorial Education Fund (1985)
 Dilma Dowicz Dos Santos Fund (2022)
 Michele and Paul Dowicz Fund (2022)
 Jessica Kate Dowicz Fund (2019)
 Matthew James Dowicz Fund (2019)
 Stephen Luke Dowicz Fund (2019)
 Stephen M. Dowicz Fund (1994)
 John & Hebe Dowling Fund (1986)
 Vivian A. Downs Fund (2021)
 Dr. Alice Fund (2019)
 Nathan and Miriam Drachman Fund (1989)
 Jamie Drake Fund (2007)
 Jamie Drake Future Fund (2007)
Bruce Dresner Fund (1993)
 Alyson & Parker Drew Fund (2000)
 Drexel Burnham Lambert Fund (1995)
Beatrice L. Drossman Fund (1998)
Dr. James R. Dumpson Fund for Social Services (2009)
 Dunbar Family Fund (2014)
 William M. Duncan Family Fund (1986)
 Wolcott and Joan Dunham Fund (2010)
 Mary Ann Dunn Charitable Fund (2012)
 Dutch Kills Civic Association Fund (2013)
 Solomon Dutka Fund (1999)
 Suzanne L. Dyer Development Fund (2012)
 The Dyer Family Fund (2012)
 Dzialga Family Fund (2013)
 East Harlem Tutorial Program Fund (1997)

E

Early Childhood Partners Fund (2016)
Evelyn and Jack Eber Fund (1995)
 E.C.B. Fund (1960)
 Economic Justice Fund (1989)
 Eddie and Carter Jamie Charitable Fund (2021)
 Edelman-Gold Family Fund (2021)
Julius and Margarete Edelstein Fund (1991)
 Edlow Fund (1996)
 Edward Oxenberg Fund (2014)
 Davis W. Edwards Fund (2008)
 Dr. Cynthia E. Edwards Memorial Fund (2022)
 Eleanor Franklin Egan Memorial Fund (1927)
 Egret Fund (2020)
 E.H.C. Foundation (1967)
 Miriam and Gerald Ehrlich Fund (2021)
 Karen Ehrlich Fund for Animals (2021)
 Julie Ehrlich and Noam Elcott Fund (2009)
 Eiber Family Fund (2000)
 Dr. Moses Einhorn Fund (1964)
 Einhorn/Lasky Family Fund (1999)
 Eiref Family Fund (2017)
 Eiseman Altschuler Fund (2003)
 Irving and Blanche Eisenberg Charitable Fund (1995)
 Carole & Richard Eisner Fund (1980)
 EJP Fund (2012)
***1120 Fund (2023)**
H. Rodger and Jessie Graham Elgar Fund (2013)
 Claudio Elia Fund (1997)
Dr. Deborah Elkins Fund (1993)
Gertrude Elkins Memorial Fund (1993)
 Howard L. Ellin Charitable Fund (2003)
 Linda A. & James H. Ellis Fund (1999)
 Nancie Ellis Fund (2004)
 Elman/Ronson Fund (2016)
 ELSAM Fund (1999)
 Lita & Walter Elvers/Zipperian Fund (1999)
 The Empire Group (2016)
 Henry C. Enders Funds (1976)
 Endowment for Westchester's Future (1987)
 The Endurance Fund (2021)
 ENEE Philanthropic Fund (1994)
Mildred F. Englander Fund (1985)
Enos Fund (1983)
 Marion C. and James E. Enright Scholarship Fund (2005)
 Martha C. Entenmann Scholarship Fund (1999)
***Gale Epstein Giving Fund (2023)**

Samuel Epstein Lecture Fund (1999)
 Gail Erickson and Christa Rice Fund (2021)
Charles and Lillian Erickson Fund (2014)
 Ericson Family Fund (2021)
***C. S. Eristoff Giving Fund (2023)**
 Ernie, Louise & Jeffrey Early Childhood Fund (1995)
Josephine L. Erwin Fund (1935)
 Esplanade Fund (2003)
 James A. Essey and Nina Zakin Essey Fund (1994)
 Bradford and Barbara Evans Fund (1986)
 Veronica and Robert Evans Giving Fund (2020)
***Ira Ewen Memorial Fund (2023)**
 Brittain Anderson Ezzes Fund (2012)

F

Facebook Empowering NYC Black Communities Initiative (2020)
 Thomas F. & Helen A. Fagan Fund (2007)
 Fahs-Beck Fund for Research and Experimentation (1993)
Edgar W.B. Fairchild Fund (1992)
 Fairway Fund (1987)
Falk, Lichten, and Rosenstein Fund (1995)
 Susan Meyers Falk Fund (1996)
 The Family Fund (2011)
 Family Fund Endowment (2020)
 Joseph Fancher Fund (1983)
 Farrand Family Fund (1993)
 Francis and Denise Farrell Family Fund (2006)
 Federal Bar Council/U.S. Attorneys' Offices Fund (2001)
 Fegan Family Fund (2008)
 Feinsod Herz Fund (1980)
 Celia Malbin Feinstein Fund (1992)
 Feldman Family Fund (1982)
 Arnold E. and Olga C. Feldman Fund (2003)
 Nancy and Michael Feller Fund (2007)
 Louise and Marvin Fenster Family Fund (1999)
 Fern's Kids Fund (2014)
 Feustel Fund (2016)
 Anthony and Vanda Ficalora Fund (1988)
 Mollie Fidel Memorial Fund (2013)
 Judith & Norman Fields Fund (1992)
Raymond H. Fiero Fund (1984)
 Brian Keith Fifield Memorial Scholarship Fund (1987)
 Filak Family Fund (1999)
Simon Finck Fund (1959)
Golda and Mollie Fine Fund (1977)
 Harriet Finkelstein Family Fund (2007)
 Kelly Ann Finley Memorial Fund (2008)
 Fireside-T Charitable Fund (2016)
 First Decade Fund (2009)
 Mark Fischgrund Memorial Fund (2003)
 Walter and Sandra Fish Charitable Fund (1997)
 Fishbein Family Fund (1998)
 Fishers Island Community Fund (2011)
 Desmond Gerald FitzGerald Charitable Fund (1986)
Kirsten Flagstad Memorial (1964)
 Clementina Santi Flaherty Fund (2007)
 Flanagan Fund (2006)
 Sam Flax Memorial Scholarship Fund (1964)
 Michael J. Fleming, Esq., Memorial Fund (2015)
Josephine Flood Memorial (1973)
 Francis Florio Fund (1974)
 Flushing Females Association Scholarship Fund (1992)
 Lorna and Rob Flynn Fund (2021)
Michel Fokine Memorial Fund (1985)
 Force Majeure Design Fund (2017)
 Ford Flaherty Fund (2022)
 Walter B. Ford Funds (1972)
 Fortune Society Education Fund (1994)
 Fosdick Fund (1986)
 John H. Foster Fund (1984)
 Foster Care Excellence Fund (2017)
 Foster/Saray Family Fund (2022)
 Ben Fox Memorial Fund (1962)
 Ellen Sydney Fox Fund (1994)
 Brendan M. Frail Memorial Fund (2010)
 Samuel Francis Fund (2005)
 Franck Family Fund (2005)
 Nicholas T. Franco Fund (2012)
 Cira S. Francovilla Memorial Scholarship Fund (2010)

Frank Fund (1995)
Abraham B. and Sarah Frank Funds (1955)
 Martin M. Frank Scholarship Fund (1990)
 Katherine M. Franke Fund (2006)
 Bethenny Frankel Charitable Fund (2012)
 Michael and Beatrice Frankel Fund (2008)
 Jane Franke Fund (2008)
 Virginia Franklin Journalism Scholarship Fund (2004)
Corinne R. Frear Fund (2000)
 Arthur and Elinor Fredston Fund (2004)
 Freedman Family Fund (2016)
 David and Paula Freedman Fund (1994)
 Anne and Frank Freeman Fund (1997)
 Freeman Fund (2021)
 Freilich Fund (2011)
 Ernest Grey Frerking/Sharon Frerking Philanthropic Fund (2012)
 Fridman Family Fund (2010)
 Julia Fried Memorial Fund (2020)
 Friedberg Fund (2020)
 Robert and Linda Friedman Family Fund (1995)
***Max Friedman and Tom Romich Fund (2023)**
 Elayne and Howard Friedman Fund (2006)
 Peggy Friedman Memorial Fund (1989)
 L. W. Frohlich Charitable Fund (2011)
 L. W. Frohlich Family Fund (2011)
 Frumious Fund (2018)
 Frunzi/Wachtel Fund (2011)
 Ricki Fulman Fund (2013)
 Fun On 2 Wheels Fund (1998)
 Fund for Astrophysical Research (2016)
 Fund for The Delacorte Theatre in Central Park (1998)
 Fund for Artists with Disabilities (2017)
 Fund for Fiorello H. LaGuardia High School of Music & Arts (1983)
 Fund for Metropolitan Opera Broadcasts (2020)
 Fund for New Citizens (1987)
 Fund for New Rochelle (2016)
 Fund for New York Youth (2015)
 Fund for The Future of Long Island Women and Girls (1997)
 Fund for Innovative Community Programs on Long Island (1985)
 Fund for Performances at The Delacorte Theater in Central Park (1999)
 Fund for Westchester's Environment (2001)
 Future of Design Jewelry Education Fund (1997)

G

***Nicholas and Lillian Gabriel Fund (2023)**
***Tony Galgano Memorial Fund (2023)**
 Gallagher Family Charitable Fund (1999)
 Laly & George Gallantz Fund (1991)
 Patricia Galteri Fund (2011)
 Charles Gamber Fund (1985)
 Colin Gardner Fund (2011)
 William T. Gardner Theatre Internship Fund (1992)
Garfinkel Family Fund (2007)
 Gloria and Barry H. Garfinkel Fund (1986)
 Garfunkel Family Fund (2018)
***Javier Garmendia Fund (2023)**
 Barbara Gauntlett Scholarship Funds (1986)
 Paul Edward Gay Fund (1990)
 Benjamin and Rachel Geballe Fund (2007)
 Jane C. Geever Fund (2008)
 Geismar Family Fund (2008)
 Bruce S. Gelb Fund (1995)
 J.F. & M. Gelband Fund in Memory of Joseph F. Gelband, Jr. (1995)
 Gemini Fund (1998)
 General Charitable Fund (1971)
 Generation Fund (2010)
 Genkides Fund (2019)
 Ruth E. and Timothy M. George Charitable Fund (1986)
Jacques A. Gerard Fund (1987)
 Pierce Gerety Memorial Fund (1998)
 Gerling Fund (2016)
 Glenn Gerrato Scholarship Fund (2001)
 Myrna & Freddie Gershon Fund (2018)
 GIA Fund (2010)
 Gibbons Owen Family Fund (2020)
 Clara A. Gierisch Fund (1975)
 Clarence H. Gifford Funds (2008)



A Pioneering Teacher Plays the Stock Market

Edna Lavey
 1928–2017

Edna and Ira Lavey Memorial Fund

Edna Lavey taught for more than 30 years at the Kew-Forest School, where Donald Trump was her kindergarten student. (We're told she retained strong opinions on him throughout her life.) Edna was known for introducing art and music into her lessons. She was a savvy investor and took calculated risks, making millions. The Ira and Edna Lavey Memorial Fund supports research into Alzheimer's disease and cancer, among other causes.

John N. and Gillett A. Gilbert Family Fund (1999)
 Rita & Bruce Gilbert Fund (1992)
 Lloyd & Lonya Gilbert Fund (1991)
Elena Gildersleeve Fund (1982)
 Stephen Gillen Family Fund (2012)
 Frank J. Gillespie Fund (1985)
 Chris Gillespie Memorial Fund (2018)
 Michael S. Gilmor Fund (2019)
 Gilmore Human Rights Fund (1980)
 Sonia Raiziss Giop Literature Fund (1994)
 Santina Giordano Memorial Fund (1985)
 Giving Collective (2019)
 Glassberg Family Fund (1997)
 Gleason Family Fund (2012)
 Robert J. Glenn Memorial Fund (1974)
 Rose N. Glenn Memorial Fund (1990)
 Madeline Shobry's Glosten Fund (1999)
 Jeanne Going Memorial Fund for Ovarian Cancer Research (2005)
 Goins Family Fund (2005)
 Charlynn and Warren Goins Fund (2015)
 Rita and Herbert Z. Gold Education Fund (1993)

Goldenberg Kutlin Family Fund (2019)
Jacob and Helen Goldfein Fund (2009)
Selma Goldmacher Charitable Fund (2006)
 Goldman Schachar Charitable Fund (2012)
 Budd and Jane Goldman Fund (2010)
 Goldrath Family Charitable Fund (2020)
Jack Goldring Fund (1986)
 Oliver and Barbara Goldstein Charitable Fund (2012)
 Patricia and Bernard Goldstein Fund (1985)
 Good Neighbors Fund (2019)
 Good Samaritan Fund (1993)
Maurice and Georgine Goodman Fund (1998)
 Roger and JoAnn Goodspeed Fund (1986)
 Goodwin Family Fund (1999)
 Everett F. and Ann P. Gordon Memorial Fund (1991)
 Gail Gordon Charitable Fund (2011)
 Gail Gordon Fund (2000)
 Milton Alan Gordon Fund (2017)
 William J. Gossen Fund (1985)
 Josh Gotbaum & Joyce Thornhill Fund (1991)
 Deborah Gottlieb-Shapiro Family Fund (2012)
 Lee Gottlieb Fund (2005)
 Lynda Gould Fund (2006)
 Anthony Gould Fund (2022)
 GoVoteNYC Fund (2021)
 Eugen Grabscheid Fund (1992)
 Gloria Grafer Critical Needs Fund (2012)
 Maggie and Gordon Gray Family Fund (1998)
 Lawrence and Barbara Green Fund (2005)
 Green Fund (1985)
Ann Susan Green Fund (2022)
 Greenberg Fund (2010)
 Selma Greenberg Fund (1997)
 J.L. Greene Arts Access Fund (2019)
 Jerome L. Greene Foundation Fund (2022)
 Leonard M. Greene Memorial Fund (2009)
Orland S. and Frances S. Greene Fund (1962)
 Greenebaum Fund (1984)
 Richard Greenebaum Fund (2007)
 Rachel Greenstein Memorial Fund (1988)
 Greentree Foundation Fund (2003)
 John Robert Gregg Fund (1985)
Linda A. Griffith Fund (1970)
Arthur Griggs Fund (1947)
Emily Griggs Fund (1944)
 Matthew Grimaldi Memorial Fund (2015)
 Stephanie Fairchild Griswold Fund (2010)
 Gross Family Fund (2003)
 Charles & Carol Grossman Family Fund (2009)
 Gross-Wacholder Fund (2021)
 Grundman Memorial Scholarship Fund (1990)
 GSLW Fund (2007)
 Rudolph Guenther Fund (1977)
Sydney A. Guggenheimer Memorial Fund (1949)
***Robert E. Guglielmo Legacy Fund (2023)**
 Sarah G. Gund Fund (2005)
 Abhijit Gurjal Fund (2022)
 Alex Guzman Things That Matter Fund (2021)
 Gwertzman Family Fund (2012)

H

Leopold Haas Fund (1984)
 Hachemian Family Fund (2022)
 Katherine & Morris Hadley Trust (1968)
Horace and Amy Hagedorn Fund (1995)
 Susan Hagedorn Activist Fund (2020)
 Emil and Zerline Hahnloser-Richard Bak Fund (1975)
 Halcom Family Fund (2014)
 Halcyon Nature Fund (2021)
 Kristy Lyn Haley Memorial Fund (2000)
 John R. Hall Jr '64 Scholarship Fund (2022)
 Luke Halpin Memorial Scholarship Fund (2002)
 Hamond & Mansky Urban Communities Fund (2022)
 Hamond Family Fund (2013)
 Hand and The Spirit Fund (1999)
 Handelman Memorial Education Fund (2010)
 Helen & Nancy Handelman Fund (2010)
 Mike Handy Memorial Fund (2003)
Lola G. Hanna Fund (1995)
 Michael Hannan Memorial Fund (2018)
 Gwenda and John Hanson Fund (1986)
 Lee Hanson and Don Scherer Fund (1986)

Happy Kids Fund (2016)
 Harbor Watch Fund (2000)
***Janet Harckham Family Fund (2023)**
 William Barclay Harding Fund (1979)
 Augusta Lehman Harlem & Lillian Harlem Martin Fund (2000)
Elizabeth Scott Harms Fund (1982)
 Harris Family Fund (1992)
Charlotte Daniels Harris Memorial Fund (2002)
 Elsie and Chelsea Harris Memorial Fund (1996)
 Karen R. Harris Fund (2022)
 Jeff & Judy Harris Fund (2003)
Katharine S. Harris Fund (1965)
 Harting & McChesney Charitable Fund (2015)
 Hastings Peace and Justice Fund (1993)
 Haupt Family Fund (2000)
 Harry and Eugénie Havemeyer Fund (2001)
 Patricia Haverland & Mark W. McBride Fund (2019)
***Haviland Charitable Fund (2023)**
 Hawk's Nest Fund (2000)
 Steve Hayden Fund (2012)
 Hayes Family Fund (1996)
Ralph Hayes Memorial Fund (1968)
 Constance Laibe Hays Journalism Fund (1994)
 Thomas Healy and Fred P. Hochberg Fund (1995)
 Nicholas C. Heaney Memorial Fund (1997)
 Broderick J. Hehman Memorial Fund (2006)
 John and Marilyn Heimerdinger Fund (1994)
Heiser Grant (1972)
 Heisman Trophy Trustees' Fund (2017)
 Heisman Trophy Youth Development Fund (2017)
Hejaz Tree Conservation Fund (2007)
 Huyler C. Held Memorial Fund (2013)
 Helen's Fund (1998)
 Hemlocks Fund (1978)
 Henderson-Fahnestock Fund (2016)
 Paul & Ann Henegan Fund (1986)
 Lucy Henning Memorial Fund (1995)
Lucy & George Henning Fund (1974)
Alexander S. Henry, Sr. and Ann S. Henry Memorial Funds (1989)
 Doris & Milton Hepner Fund (2000)
 Herbster Family Fund (1990)
 Frances Herman Family Fund (2010)
 Paul and Malka Herman Fund (2019)
 Hershenov Family Fund (2012)
 Joel E. Hershey Community Fund (2018)
 Andrew and Phyllis Herz Fund (2019)
 Don and Marilyn Berger Hewitt Fund (1998)
 Russell Hexter Filmmaker Fund (1997)
Leo and Ethel Heymann Memorial Fund (1954)
 High Exposure Fund (1993)
 High School of Commerce, Class of 1911 Scholarship Fund (1967)
 JD Hilton Fund (2021)
Ann and Leon Himmelberg Fund (2006)
 Hines Family Fund (2022)
 Hinkaty Family Fund (2022)
 Steven Hirsch Fund D (1973)
 Steven J. Hirsch Fund (2002)
 Martin Hirschorn IAC Fund (1995)
 Margaret M. Hitchcock Fund (1946)
 The Ho/Ching Charitable Fund (2012)
 Mary and David Hoar Trust for The Honor and Glory of God (1975)
 Charles B. Hobson Fund (2021)
 Rita and Irwin Hochberg Charitable Fund (1982)
 Hodgson Fund (1995)
 John J. Hoffee Fund (1996)
 Hoffman Fund (2011)
 Gloria and Joel S. Hoffman Fund (2001)
 Marion O. and Maximilian E. Hoffman Fund (1984)
Lillian and William Hoffmanns Fund (1990)
 Holmén Family Fund (2002)
 Britt Holmén Family Fund (2002)
 Robert C. Holmén Family Fund (2019)
 Mark Holmén Family Fund (2002)
 David and Carolyn Holstein Fund (2018)
 Rhoda Holzer Memorial Fine Arts Fund (2016)
 Homeless Outreach and Assistance Fund (1997)
 Ettie Chin Hong Fund (2006)
 Katie Danziger Horowitz & Steven G. Horowitz Family Fund (1995)
 John and Sandra Horvitz Fund (1996)
 Hospital Patients Fund (1958)
 Norris Houghton Theatre Fund (1988)
Ralph N. Hubbard Fund (1948)

E.B. Hubbard Fund (2002)
 Dr. Joseph E. Hughes Scholarship Fund (1984)
 Margaret J. Hughes Memorial Fund (1990)
 Jeffrey R. Hull Charitable Fund (2019)
 Julie Hunnewell Fund (1987)
 Christine Hunsicker Charitable Fund (2012)
 Alma D. Hunt/VCM L.I. Fund (1997)
Lisette Vereea Ruegg Hunter Fund (2011)
 Charles Maland Hurr Family Fund (2021)
Mildred K. Hurson Fund (2003)
 HVCS Legacy Fund (2021)
 Hyatt Family Fund (2008)
 Julian H. Hyman Memorial Fund (1985)
Rene K. and Samuel M. Hyman Memorial Fund (1978)

I

Iancu-Trinz Family Fund (2013)
Charles F. Iklé Scholarship and Research Funds (1965)
 Alice & Warren Ilchman Fund (2000)
 Impact Investing Reserve Fund (2021)
 In Memory of Elissa Fund (2004)
***Inclusive Internet Fund (2023)**
 Indian Mountain School Fund (1993)
George A. Ingalls and Ann C. Ingalls Fund (1957)
 Innovative Design Fund (1988)
 Intercultural Interdisciplinary Initiatives Fund (2008)
 Ann Marsden Irvin Fund (2009)
 Paul J. Isaac Fund (1981)
 Marjorie S. Isaac Fund for Animals (2017)
 Marjorie S. Isaac Fund for People in Need (2017)
 Karen Cromer Isaac Fund (2007)
 Susan Isaacs and Elkan Abramowitz Charitable Fund (2005)
 Island Fund (1975)
John Paul Itta and Tony Murray Fund (2008)
 Isabel C. and Walter T. Iverson Fund (1986)
 Ivory Family Fund (2018)
J B Fund (1985)

J

Douglas Jackson Memorial Scholarship Fund (1996)
 Attilio and Myrtle Jackson Fund (2013)
 F. Jackson Fund (2007)
 Frederick Jacobi Memorial (1952)
 Berenice and Herman Jacobs Family Fund (1997)
 Lawrence Jacobs Fund (2011)
 Jade Fund (1999)
 Jamaica Fund (1989)
 James E. Miaritis Memorial Fund (2021)
Lucy Wortham James Fund (1935)
Lucy Wortham James Memorial (1939)
 Walter B. James Funds No. 1 & 2 (1927)
Warren S. and Florence L. Jampol Fund (2006)
***Jandon Fund (2023)**
Jane Fund (2012)
 Ethyl Janson Fund (2014)
 Gail and Robert Janukowicz Charitable Fund (2008)
 JBLS-Hon. Steven I Milligram Memorial Fund (2020)
 Jeanne d'Arc Foundation (1927)
 Jelly Bean Fund (2017)
 Paul and Barbara Jenkel Fund (1998)
 Kayce Freed Jennings Fund (2007)
 Jenny-Hiteshew Fund (1994)
 Jenny-Hiteshew Family Fund (2019)
 Marie J. Jensen Scholarship Fund (2005)
Elise Jerard Environmental and Humanitarian Trust (1981)
***JFIS + MDMS Fund (2023)**
 Edwin Irving Johnson Scholarship Fund (1985)
 Harry J. and Teresa H. Johnson Graduate Scholarship Funds (1987)
 Harry J. and Teresa H. Johnson Undergraduate Scholarship Funds (1983)
 Harold & Carol Johnson Fund (2017)
 Janet A. Johnson Scholarship Fund (2003)
Laura and Ray Johnson Fund (2003)
 Bob and Pat Johnston Fund (2020)
 James R. Johnston Fund (2012)

Jon and Deb Charitable Fund (2015)
 Kristin & Adrian Jones Charitable Fund (2013)
 Doug Jones and John Sanger Theater Ticket
 Fund for Greater New York (2015)
 Jophed/Thomas Fund (1975)
 Shanna Joseph Memorial Fund (2020)
 Margaret Jourdan Fund (2005)
 J'Quar Fund (2018)
 JQW Fund (2006)
 JTS Fund (2011)

***Junior League of Westchester-on-Hudson
 Fund (2023)**

JWHands Charitable Legacy Fund (2010)

K

Kadejay Fund (1998)
 Eleanor Kagan Fund (2015)
 Daniel Kaizer and Adam Moss Fund (2014)
 Kanner Family Fund (2016)
 Susan Grant Kaplansky Fund (2001)
 Edith R. Karel Fund (1998)
 Karish Education Fund of The Horticultural
 Alliance of The Hamptons (2000)
 David & Dale Karp Family Charitable Fund
 (2003)
 Hagop, Arousiaq and Arpy Kashmanian
 Scholarship Fund (1999)
 Robert A. Kasner Fund (2005)
 Julius and Eleanor Kass Family Fund (2021)
 Katinas Family Fund (2019)
 Kenneth L. and Veronica K. Katz Fund (1999)
 Jonathan Ned Katz Fund (2008)
 Judy Katz/Oren Rudavsky Fund (1996)

***Katz-Scher Family Fund (2023)**

Glenn and Kim Kaufman Fund (2004)
 Robert M. Kaufman Fund (1988)
 Robert M. Kaufman Fund No. 2 (2002)
 Sheila Kelley Kaufman Fund (2009)
 Wendy B. and Jeffrey A. Kaufman Fund (2018)
Marion Esser Kaufmann Fund (1985)
Walter and Selma Kaye Fund (1994)
 Kearney Family Fund (2012)
 Allan and Margaret Keene Charitable Fund
 (2013)

Robert Prior Kehoe Fund (1974)
 Richard Keim Family Fund (1983)
 William Wilson Kelchner Memorial Fund (1972)
 Jane and Donald Seymour Kelley Fund (1997)
 Kelnor Family Fund (1996)
 Carl and Doris Kempner Fund (1996)
 Michael C. Kempner Fund (1997)
 Kenary Fund (2004)
 Kenilworth Fund (1970)
 The Muriel & Bob Kennedy Fund (2017)
 M. Kenner Family Fund (2021)
 Gilbert and Rebecca Kerlin Fund (2005)
 Jonathan O. Kerlin Fund (2005)
 Kerlin Tucker Donor-Advised Fund (2012)
 Kern Charitable Fund (2011)
 Dr. Leo Kesner Fund for The Advancement of
 Science (2012)

Khan Family Fund (2020)
 Ellen Kheel & Arnold S. Jacobs Fund (1998)
 Kidney Transplant Fund (2007)
 Kids Making a Difference Fund (2000)
 Chloe E. Kimball Foundation Fund (2012)
 Eliza V. Kimball Foundation Fund (2012)
 John H. Kimball Foundation Fund (2012)
 Kimerling Career Development Fund (2000)
 Morton L. Kimmelman Fund (2001)
 King Family Fund (2000)
Joseph M. Kirchheimer Fund (1989)
 Gail Kirkham Memorial Fund (2017)
 David and Paula Kirsch Family Fund (2004)
 Kirschbaum Nussbaum Fund (2020)
 John H. KIRST Memorial Fund (1999)
 Kismet Fund (2005)
 Susan B. & Donald M. Kitchen Fund (1989)
Jane W. Kitselman Fund (2015)
 Casey Kizziah Fund (1994)
 Klass Family Fund (2017)
Edward and Edith H. Klauber Fund (2013)
 Eve Klein Fund (2022)
 Edith and Jules Klein Fund (2012)
 John C. Klein Trust (1981)
 Allen Kleinman Fund for Arts & Education
 (2016)
 Morris Kligman Memorial Fund (2000)

Alan and Kathryn Klingenstein Family
 Foundation Fund (2013)
 Knapp/Swezey Scholarship (2022)
 Knickerbocker Fund (2018)
 Jane & Richard Koch Fund (1987)
 Koide Family Dobbs Ferry Educational Fund
 (2022)
 KOKORO Fund (2004)
 Kona Family Fund (2014)
 Kona-T Charitable Fund (2016)
 Nancy Ko-Rand and William Rand Fund (2022)
 Henry J. and Ellen Korb Fund (2016)
Korda Fund (1990)
William A. Koshland Fund (1987)
 John C. Koster Fund (2003)
 Kotval Shroff Family Fund (2011)
 Ellen Kozak Fund (2011)
 Patricia Berry Kozak Fund (2004)
Henry Phillip Kraft Family Memorial Fund (1996)
 Kramer and Hallstein Charitable Fund (2012)
 Elaine & Alison Kranich Fund (2011)
 Krasnoff Family Fund (1985)
 Krasnoff Charitable Fund (2011)
 Sydney and Marjory Krause Fund A (2004)
 Sydney and Marjory Krause Fund B (2012)
 Sydney and Marjory Krause Fund C (2012)
 Eileen S. Krill Fund (2012)
 Patricia Kucinski Memorial Fund (2003)
***Kulkul Bell Fund (2023)**
Wheaton B. Kunhardt Fund (1949)
 Arthur H. Kunz Memorial Fund (2005)
 Kurz Family Fund (2017)
 Ruth Kurzweil Fund (2009)

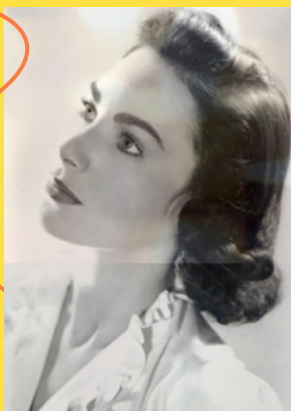
L

Lachance Family Charitable Fund (2012)
 Timothy J. Lafferty Memorial Fund (2019)
 Lalitamba Saranam Fund (2020)
 Lamport Foundation Fund (1975)
 Landlocked Fund (1986)
Lands-Cabrera Fund (2014)
 Allan Browning Lane Memorial Funds (1980)
 Lang Fund (1982)
 Daniel Lang Memorial Fund (1998)
 Langner Family Fund (2000)
 Judith and Jean Lanier Fund (1986)
 Rose Kean Lansbury Fund (2000)
 William S. and Stanley S. Lasdon Fund (1984)
 Judith Lavenberg Fund (2020)
 Stephen S. Lavenberg Memorial Fund (2019)
 Edna and Ira Lavey Memorial Fund (2019)
 Ed & Lee Lawrence Fund (1988)
 Lawrence Fund, New York (2021)
David Lawrence Fund (2000)
 Blanche E. Lawton Fund (2009)
Le Veque Memorial Foundation (1948)
 Charles Henry Leach II Fund (2013)
 Learning Center Fund (1994)
 Dorothy and John Lebor Fund (1999)
 Lee Family Chinese Immigrant Education Fund
 (2001)

***Corky Lee Charitable Fund (2023)**

Jeffrey R. and Joan Leeds Fund (2005)
Howard Z. Leffel Fund (1970)
 Lefrak Fund (1999)
 Barbara Legname Memorial Fund (2015)
 Lehman Brothers T. Christopher Pettit
 Memorial Scholarship Fund (2008)
 Mark E. Lehman Fund (2008)
 Karl H. and Jewel I. Lehmann Fund (2010)
 James L. Leinwand Fund (1998)
 Delia and Artemio León Fund (1997)
Anne Leonhardt Fund for The Needy (2015)
Frederick H. Leonhardt Fund (1979)
 Leonia High School Class of 1979 (2001)
 LePage Family Fund (2019)
Reba Q. Lerch Fund (1971)
Ursula Lerse Fund (2010)
 Donna Leven Memorial Fund (2004)
 Betty & John A. Levin Fund (1998)
 Levin Family Fund (1997)
 David and Lindsay Levin Fund (2021)
 Anna and Peter Levin Fund (2021)
***Thomas L. Levine Fund A (2023)**
***Thomas L. Levine Fund B (2023)**
Robert & Patricia Levinson Fund (1985)
 Robert A. & Patricia S. Levinson Award Fund
 (2016)

Andrew Levinson Memorial Fund (2015)
 Irene Levoy Fund (2020)
 Jacob Levy Fund (1990)
 Lewis Family Fund (2006)
 Grace Lewis Fund (2018)
 Wadsworth Russell Lewis Trust Fund (1989)
***Bryan Leys and Sharon Weiss Musical
 Comedy Development Fund (2023)**
 Long Island Civic Engagement Fund (2017)
 Long Island Sound Stewardship Fund (2018)
 Lichstein Family Fund (1992)
 Lichtenstein-Miller Fund (1994)
 Claire Lieberwitz and Arthur Grayzel Theater
 Fund (2015)
 Liebowitz Family Fund (2022)
Robert and Janet Liebowitz Fund (2013)
 Dawn Lille Dance Award Fund (1994)
 Limberlost Fund (2016)
 Ken Lin Fund (2002)
 Robert and Maria Lin Fund (1992)
 LINDA Fund (2015)
 Linden Memorial Fund (1994)



A Dancer Who Supported the Arts

Marjorie Isaac
 1921-2017

Marjorie S. Isaac Funds

Marjorie Isaac attended the Horace Mann School for Girls and studied under George Balanchine. She danced at the 1939 World's Fair, at Radio City Music Hall, and on Broadway. She and her husband had three sons. She was devoted to dance and provided major support to dance students and companies. Marjorie commissioned more Paul Taylor works than any other patron—24 dances in all. Her funds at The Trust support people in need and animal welfare.

Adolf G. and Eloise Linden Scholarship Fund (1995)
Alexander and Ella Lindey Fund (1991)
 Lindgren Family Fund (1999)
 George N. and Mary D. Lindsay Fund (1996)
 David F. & Dorothy W. Linowes Fund (1999)
 David F. and Dorothy W. Linowes Philanthropic Fund (2015)
 Linville Fund (1993)
 Linwood Fund (1983)
 Lion and Hare Fund (1970)
 Chris Lipari Fund (2019)
 Lipp Family Fund (2020)
 William J. and Helen Z. Lippincott Fund (1994)
 Lissner Charitable Fund (2011)
 Literacy in Early Childhood Fund (2000)
 Edward H. Little Memorial Trust (1982)
 Royal Little Fund (1992)
 Marian and William Littleford Fund (1993)
 Nancy Liu Memorial Fund (1995)
 Livingston Fund (1995)
 LJTI Fund (2012)
 Debra Lobel/Beverly Dash Fund (2004)
John L. and Frances L. Loeb Fund (2011)
 Loewenberg Family Philanthropic Fund (1983)
Wilhelm Loewenstein Memorial Fund (1940)
 Michael Lomax Memorial Fund (2001)
 John A. Lombardi Scholarship Fund (2006)
 Peter Lomonte Fund (2009)
 Long Island Beech Fund Trust A (2015)
 Long Island Affordable Housing Project Fund (2011)
 Long Island Community Foundation Fund (1977)
 LICF Operating Fund (1989)
 Long Island Fund for The Arts (1985)
 Long Island Fund for Youth Programs (1987)
 Long Island Immigrant Children's Fund (2014)
 Long Island Unitarian Universalist Fund (1992)
 Jane P. Long Fund (1991)
 Longview Fund (1990)
 LOOK UP for Adam Fund (2015)
 Karin Lopp Fund (1998)
Elizabeth Meyer Lorentz Fund (2002)
 Elizabeth Lorentz Fund (1986)
 Lorraine Gregory Family Fund (2014)
 Thomas H. Loughman Memorial Scholarship Fund (1978)
 Ellee J. Lovelace Fund (1970)
 John F. Loverro Memorial Fund (2004)
 Ruth Norden Lowe and Warner L. Lowe Memorial Fund (1990)
 Lowenstein Fund (2002)
 Lowenthal Family Fund (2012)
 Lowry Family Charitable Fund (2008)
 Patrocina Lu Charitable Fund (2012)
 Rena M. Lucardi Fund (1997)
 Roselle Patricia Luciano Literacy Fund for Women (1996)
 Melvin Ludwig Memorial Fund (1993)
Edna Wells Luetz/Frederick Riedel Fund (2009)
Edna Wells Luetz/Frederick Riedel Fund No. 2 (2012)
***Sara and Karen Lukinson Fund (2023)**
 Judge J. Edward Lumbard U.S. Attorneys Fellowship Fund (1977)
 LW Fund (2012)
 Lynford Family Fund (1988)
 Amelia and George Lyons Memorial Fund (1994)
 Lester and Helen Levinthal Lyons Fund (1994)

Maldonado Fund (2007)
 Laura J. and Henry Clay Mallard Fund (2021)
 Mallouk Family Fund (2006)
 Thomas G. Malone Donor Advised Fund (2009)
 John F. Maloney Memorial Fund (1998)
 Terry and Arielle Maltese Fund (1998)
 Mancino Family Fund (2003)
 Mannheim Fund (2011)
 Mann McCarthy Fund (2020)
 David and Jacqueline Siben Manning Charitable Fund (2019)
 Anthony Mannucci Fund (2014)
 Mark Mannucci Fund (2014)
 Mann-Wheeler Fund (2012)
 Mapleside Fund (2020)
 Christine D. Marcin Family Fund (2017)
 David L. Marcus and Susannah Ludwig Fund (2016)
 Jan W. Mares Fund (1978)
 Mark Abrahams and Scott Wechsler Family Fund (2021)
 Alison Billie Marks Fund (1993)
 Alison Billie Marks Fund No. 2 (2012)
 Dora, Edythe K. & Sylvia Marks Family Fund (1999)
 Dorothy Marks Fund (1997)
 Alfred J. Marrow Fund (1974)
 Patricia T. Marshall Fund (1998)
 William T. & Lynn Steppacher Martin Fund (2001)
***Ann Martini Fund (2023)**
 Donald and Amanda Martocchio Fund (2008)
 Marwell Family Fund (2017)
 Vincent James Mastronardi/Thomas J. Fahey Memorial Fund (1993)
 MacDonald Mathey Fund (2001)
 Joan and Robert Matloff Fund (2016)
 Joyce Matz Fund (2006)
 Edward Maverick Fund (1963)
 Maxwell Family Fund (1991)
 Claudia Kress Mayberry Fund (2000)
 Jessica Kress Mayberry Fund (2000)
 Paul M. Mazur Fund (1945)
 McAfee Foundation Fund (2003)
***Sarah and James McAfee Jr. Fund (2023)**
Sarah S. McAlpin Fund (1996)
Townsend Martin McAlpin Fund (1983)
 Blanche and Edwin D. McArthur Fund (1999)
 McCaffrey Family Fund (1985)
 McCarthy Mann Fund (2018)
 Ann D. McChord Fund (2018)
McClendon Fund (1999)
 Cyrus McCormick and Florence S. McCormick Memorial Fund (1995)
 Colonel and Mrs. Henry Bayard McCoy Memorial Fund (1957)
 McCoyd Family Fund (2021)
Ruth McCreary Funds (2001)
 McCrosson Family Fund (2011)
 Dapper McDonald Memorial Fund (2012)
 The Caitlin Rose McDonald Memorial Fund (2019)
 Donald Wesley McDougall Memorial Fund (1991)
 John Todd McDowell Environmental Fund (2004)
 Michael R. McGarvey Fund (2001)
Richard E. "Rusty" McGivney Memorial Fund (1999)
 John F. and Jean C. McIlwain Fund (1995)
 Mark McInerney Fund (1986)
 Victor and Dorothy McIntosh Fund (2013)
 Helen P. and Randall P. McIntyre Fund (1986)
 Dave McKennan Memorial Fund (2003)
Isabel C. McKenzie Fund (1952)
***McKinney Fund for Women in Photography (2023)**
 Kate McLeod and Jerry Flint Fund (2013)
 The McMillen Family Fund (2022)
 Patrick J. McNeill Scholarship Fund (1997)
Janet H. McPherson Memorial Fund for Children (1984)
 McWhelan Fund (2011)
 Emily McIntyre Means Fund (1995)
 Louis K. & Susan P. Meisel Family Fund (2015)
 Melzer Fund (1994)
 Alan P. Mendelsohn Memorial Scholarship Fund (1999)
Toni Mendez Fund (2003)
 Joyce Menschel Family Fund (2022)
 George W. Merck Fund (1987)
Helen Merrill Fund (1998)

Marjorie Merryman Fund (2012)
Ralph D. Mershon Fund (1953)
LuEsther T. Merz Fund (1995)
Charles Merz and Evelyn Scott Merz Memorial Funds No. 1 & 2 (1984)
 Merz Supplemental Fund (1986)
 Albion and Natalie Metcalf Fund (2010)
 Meyer Family Fund (2008)
Helen F. and Alfred S. Meyer Fund (2008)
 Michaels Fund (1979)
 Jeanne Michaud Gift (1964)
 Michel Family Fund (2012)
Middle Road Fund (1983)
 Middleton Family Fund (2001)
 Midnight Mission Fund (1974)
 Earl Miller Fund (2006)
 Millie Fund (2000)
 Michal Milner - Laurel Garron Fund (2021)
 William E. Mintzer Memorial Fund (1999)
 Miracle-Gro Fund (2001)
 Joseph & Marion L. Mitola Family Fund (1999)
 Asa Uyeda Mitsudo and Sumi Lynn Koide Memorial Fund (1996)
 M.J.H. Fund (1964)
 MLW Advised Fund (1998)
 Mobility Rehabilitation Fund (1964)
 Leo Model Fund (1988)
 Model/Falkowski Fund (2010)
 Robert and Moira Moderelli Fund (2008)
 Moles Scholarship Fund (1996)
 Molly & Carl Fund (2000)
 Money In Motion (2000)
 Claire Hays Montaigne Memorial Fund (2022)
 Moore Family Fund (1994)
 AF Moore Fund (2010)
 Anne Moore and Arnold Lisio Fund (2008)
 Anne L. Moore Fund (2010)
 Barbara F. and Richard W. Moore Fund (1997)
 Deborah W. and Timothy P. Moore Fund (2007)
 Elisabeth Moore Fund (2010)
 Katherine C. & David E. Moore Fund for Community Development (2005)
 Katherine C. and David E. Moore Fund for Education (2021)
 Natalie C. Moore Fund (2020)
 Meredith C. Moore Fund (2010)
Shirley I. Moore Fund (2002)
 Terence W. Moore Memorial Fund (2004)
 Zachary Moore Fund (2010)
 Moosehead Fund (1996)
 Arthur G. Moraes Memorial Fund (1999)
 Morey Family Fund (2022)
 Marie Morgello Book Fund (1993)
 Jenny Morgenthau and Eugene R. Anderson Fund (1992)
 Morningside Heights Community Fund (2017)
 Morningside Retirement and Health Services, Inc. Fund (1993)
 Morris Fund (2006)
Alice V. & Dave H. Morris Memorial (1958)
 Jennifer Emily Morris Memorial Fund (1985)
 Lawrence Morris Charitable Trust (1992)
 Robert C. Morris & Aline B. Morris Fund (1939)
 Ray Mortenson - Jean Wardle Fund (1996)
 George T. Mortimer Foundation (1970)
 Mortimer Fund for Native American Children (2020)
 Morvillo Abramowitz Grand Iason & Anello, P.C. (2006)
 Mosaic Fund (2018)
 Nathan Moscow Fund (1985)
 Henry and Lucy Moses Fund (2011)
 Hanna and Jeffrey Moskin Family Fund (1997)
 Sam & Fanny Moskowit Fund (1986)
 Mount of Olives Fund (1989)
 Michael Moverman Memorial Fund (1998)
 Frieda Mueller Fund (1981)
 Joanna Mufson Memorial Trust Fund (1983)
Mulber Fund (1947)
 Stephen Mulderry Memorial Fund (2001)
 T.F. Mulvoy Charitable Fund (2012)
 Alexandra Munroe Fund (2002)
 Munson Family Fund (2000)
 Munson Foundation (1978)
 Marjorie Oatman Munson Memorial Fund (1980)
 Mieczyslaw Munz Piano Competition Fund (2020)
 Murphy Prospect Fund (2014)
Thomas W. and Florence T. Murphy Fund (1984)
 Thomas W. Murphy, Jr. Fund (2011)
 Virginia Murphy Memorial Scholarship Fund (1954)

M

Clara L. Macbeth Funds (1977)

Margaret T. MacCary Family Fund (2021)
 Nancy G. and C. Richard MacGrath Fund (1996)
 Ralph and Susan Mack Charitable Fund (2008)
 Lloyd F. MacMahon Fellowship Fund (1989)
 Edith Carpenter Macy Memorial Fund (1926)
 Susan Madden Fund (2015)
 Wilson H. Madden, Jr. Fund (1993)
 Made By Nacho Charitable Fund (2021)
 Kendall Madison Leadership Fund (1995)
 Maginnis Family Fund (2020)
 Mahony Emergency Worker Training Fund (2020)
 Brian and Florence Mahony Fund (1997)
 Kevin G. Mahony Charitable Fund (2012)
Thea Maitinsky Scholarship Fund (2021)
 Major Fund (1971)

William and Janice Murphy Charitable Fund (2012)
Musical Arts Fund (1939)
Musiker Family Charity Fund (2018)

N

Myrna Nachman Fund (2022)
Nager-Wentworth Fund (1993)
Anni P. Nalbandian Memorial Scholarship Fund (1997)
Nana & Annie's Fund (1999)
Nanell Fund (2014)
The Naskeag Fund (2012)
Nassau/Suffolk Fordham Law Alumni Scholarship Fund (1991)
Murray L. and Belle C. Nathan Fund (1996)
Nathoo Family Fund (2014)
Walter W. Naumburg Memorial No.1 (1960)
Walter W. Naumburg Memorial No. 2 (1960)
Navesink River Group Fund (2002)
NCJW South Shore Section Community Fund (1995)
Richard H. Needham Fund (1995)
Nancy F. & Daniel A. Neff Charitable Fund (2011)
Ness Fund (1972)
Neuberger Berman Fund (1980)
Daniel Neubourg Fund (1999)
Nicole and Mark Neuhaus Fund (2000)
New Pilot House Fund (2020)
The New York Community Trust Emergency Response Fund (2020)
New York Critical Needs Funds (1975)
New York Keller Family Fund (2004)
New York State Census Equity Fund (2018)
New York Vietnam Veterans Memorial Fund (1983)
Eda and Stanley Newhouse Fund (1983)
James L. Newhouse Fund (1986)
Barnett and Annalee Newman Foundation Fund (2017)
Kenneth C. Newman Fund (2016)
Nancy A. Newman Fund (2012)
Reverend and Mrs. R. Heber Newton Fund (2006)
Herbert Nidenberg Scholarship Fund (1993)
Nimble Waiter Fund (2004)
Nish Family Fund (2008)
Nollmann Fund (2004)
North Country Community Association Fund (2002)
North Fork Fund (2003)
North Fork Side By Side (2020)
North Star Guiding Light Fund (2022)
Northcliff Philanthropic Fund (1979)
Northrop Grumman Endowment Fund for L.I. Women and Girls (1996)
Northwell Health Employees' Dependents Scholarship Program (2020)
Northwell Health Community Scholarship Program (2022)
Northwest Harbor Fund (2007)
Adelaide Walker Nugent Fund (1974)
NYC Workforce Development Fund (2001)
***NYCT Scholarship Fund (2023)**
NYSSCPA - Nassau Chapter Giving Back to Charity Fund (2014)

O

Oak & Acorn Fund (2000)
Oasis Fund (1984)
O'Connell Family Fund (2017)
Sheila J. O'Connell Fund (2007)
A.P.J. O'Connor Fund (1996)
Robert K. and Jean O'Connor Fund (1979)
Thomas and Maureen O'Connor Fund (2012)
William B. and Suzanne H. O'Connor Fund for Visual Disabilities (2019)
William B. O'Connor Fund (1996)
Thomas J. and Margaret Lynch O'Connor Scholarship Fund (1994)
Octagon Fund (1978)
Mary P. Oenslager Foundation Fund (1996)
Abraham Oestreicher Fund (1972)
Mary F. Ogorzaly Fund (2014)
Bilge Ogut-Cumbusyan Achievement Fund (2012)

Okorn Family Fund (2010)
Florence C. Oliveira Memorial (1969)
Olmezer Family Fund (1998)
Olmezer Westchester Fund (1998)
Charles R. O'Malley Fund (2009)
Jacqueline Kennedy Onassis High School Fund (1997)
Open Door Fund (1996)
Nicholas Loren Whitney Opinsky Fund (2020)
Oppenheim Family Fund (2000)
Martin and Suzi Oppenheimer Philanthropic Fund (1998)
Origo-Levy Animal Care Fund (1993)
Origo-Levy Child Welfare Fund (1993)
Susan Orkin Fund (2005)
Maxwell Orloff Fund (1998)
Orr Pitts Family Fund (2014)
Orville-Nammour Family Fund (2018)
Lida Orzeck Legacy Fund (2020)
Linda W. Osanik Fund (2010)
Donald R. Osborn Fund (1986)
Robert Jolin Osborne Fund (2019)
Oscar Fund (2018)
***Ossining BELL Equity Fund (2023)**
***Ossining Engineering Fund (2023)**
Courtlandt Otis Fund (1973)
Jeanne Marie Otter Scholarship Fund (1989)
Overbrook Family Advised Fund of Charlotte Lindemann (2021)
Overbrook Family Advised Fund 001 (2012)
Overbrook Family Advised Fund 002 (2012)
Overbrook Family Advised Fund 003 (2012)
Overbrook Family Advised Fund 004 (2018)
Overbrook Family Advised Fund/Arthur G. Altschul, Jr. (2012)
Overbrook Family Advised Fund of Charles Altschul (2012)
Overbrook Family Advised Fund of Serena Altschul (2012)
Overbrook Family Advised Fund of Stephen F. Altschul (2012)
Overbrook Family Advised Fund of Carolyn J. Cole (2012)
Overbrook Family Advised Fund, EAM (2012)
Overbrook Family Advised Fund of Joyce Fensterstock (2017)
Overbrook Family Advised Fund of Elizabeth Graham (2012)
Overbrook Family Advised Fund of Julie Graham (2012)
Overbrook Family Advised Fund of Kathryn G. Graham (2012)
Overbrook Family Advised Fund of Kristin Graham (2012)
Overbrook Family Advised Fund of Michael C. Graham (2012)
Overbrook Family Advised Fund of Robert C. Graham, Jr. (2012)
Overbrook Family Advised Fund of Frances Lindemann (2021)
Overbrook Family Advised Fund / Sticky Wicket Fund (2012)
Overbrook Family Advised Fund of Helen Lindemann (2021)
Overbrook Family Advised Fund of James Graham (2021)
***Overbrook Family Advised Fund of Olivia Kooyman (2023)**
Owen Fund (1986)
Diane J. Owen Memorial Fund (2005)

P

Bishop Robert L. Paddock Fund (2010)
F. LeMoyné Page Memorial Fund (1977)
Mary LeMoyné Page & Romaine LeMoyné Billings Memorial Fund (1980)
Manfred Pakas Scholarship Fund (1981)
Sylvia & Morris Paley Fund (2002)
Phyllis and Edward Palleschi Family Fund (2014)
Pamina Fund (2014)
Pammy Fund (1989)
Heidi Paoli Fund (1987)
Katharine A. Park Funds for The Elderly (1982)
William Hallock Park Research Fund (1976)
Bob & Margaret Parker Charitable Fund (2014)
Parkinson Fund (1995)



From Morocco to Brooklyn, an Entrepreneur's Legacy Lives On

Victor Elmaleh
1918-2014

Victor Elmaleh
World-Wide Fund

Victor Elmaleh moved to Brooklyn from Morocco as a child. He studied piano and architecture and worked as a draftsman after college. He and his wife, the celebrated ballerina Sono Osato, were expecting their first child when he started World-Wide Holdings with two college friends. The company imported the United States' first Volkswagon Beetles and eventually switched to real estate development, becoming a multibillion-dollar enterprise. His fund recently supported civic engagement opportunities for young people and vaccine education.

Lorenzo and Isabelle Parsons Scholarship Fund (1998)

Mary Sherman Parsons Fund (2005)
Elise and Stephen Partridge Fund (2015)
Patricof Family Foundation Fund (1979)
Robert P. Patterson Memorial (1952)
Dorothy Patterson Fund (2014)
Paul's Fund (2002)
Oliver H. and Lola G. Payne Fund (1994)
Peacedale Fund (2022)
Stewart P. Pearce Memorial Fund (2016)
Peconic Stewardship Fund (1984)

***Hilda Pedersen and Paul Liebowitz Fund (2023)**

Pedowitz Family Fund (1999)
***Charles Peebles Memorial Fund (2023)**
Daniel Pekarsky & Stephanie Stone Fund (2017)
Peltier Family Fund (2010)
Peltier Fund (2009)
Pennies from Heaven Fund (2001)

Peppercorn Fund (2015)
 Donald and Miriam Marya Perkins Charitable Fund (1989)
 Lawrence R. Jr. & Thelma Dale Perkins Fund For Minority Education (1993)
 Dorothy Perlow Fund (1996)
 Jacob Perlow Memorial Fund (1983)
Irene Peron Fund (2000)
 John and Mary Perri Fund (2019)
 Perry Family Fund (1988)
 Richard L. Perry Memorial (1935)
 Roger Perry Memorial Fund (1999)
 Perry Persichilli Memorial Fund (1996)
 Leonard L. Perskie Memorial Fund (1980)
 Julie and Andrew Peskoe Fund (2022)
 Petersmeyer Family Fund (1973)
 Susan Petersmeyer Fund (2009)
 Alexander W. Peterson Foundation Fund (2012)
 Drew Peterson Foundation Fund (2012)
 Michael B. Peterson Foundation Fund (2012)
 Peter Cary Peterson Foundation Fund (2012)
 Peter G. Peterson and Joan Ganz Cooney Fund (1980)
 Peter G. Peterson Fund (1977)
 Steven C. Peterson Foundation Fund (2012)
 Michael A. Peterson Fund (2019)
 Seymour & Beverly Peysen Fund (1986)
 Stowe and Charlton Phelps Charitable Fund (2014)
 Phil Fund (2001)
 James and Margaret Philbin Scholarship Fund (2003)
 Hal Philipps Fund (2012)
 Kenneth A. and Helen Clark Phillips Fund (1972)
Charles M. Phinny Fund (1987)
 Phoenix Collective Fund (2021)
 Mimi Pichey Fund for Reproductive Rights (2020)
 Pickman Family Fund (2018)
 James and Elizabeth Pickman Fund (2015)
 John P. Picone Charitable Foundation Fund (2004)
 Picower Fund (2011)
 Pilkington Family Fund (1996)
Donaldson C. Pillsbury Fund (2009)
 Marnie S. Pillsbury Fund (2006)
 Pilot House Fund (1985)
 Pine Cone Fund (2000)
 Pine Tassel Fund (2014)
 Pine Tree Fund (2013)
 Pinkerton Trust (1979)
 Marietta C. Pino Memorial Fund (1982)
 Emanuel and Nora Piore Fund (2002)
 Pisacano Family Fund (1995)
***Marguerite O. Pitts and William Reid Pitts III Fund (2023)**
***Marguerite O. Pitts and Bradley McGilvary Pitts Fund (2023)**
 Raymond M. and Alice M. Planell Fund (2006)
Joseph, Violet, Virginia, and Muriel Pless Family Fund (2014)
 Poe Howard Charitable Fund (2022)
 Poe Howard Midsummer Fund for The Arts (2022)
 Oleg M Pohotsky Memorial Fund (2022)
 Carol D. and John J. Poister Fund (2022)
John Polachek Fund (1958)
 Samuel S. & Anne H. Polk Charitable Fund (2000)
 Sam and Anne Polk Family Fund (2006)
 Maxwell A. Pollack Fund (1986)
Leo L. Pollak Memorial Fund (1984)
 Helene Pomerantz Memorial Fund (1991)
Robert and Ellen Popper Scholarship Fund (2010)
***The Diane and Richard Porter Fund (2023)**
 Harriet B. and Edward Everett Post Fund (1986)
 Amy and Martin Post Fund (2011)
 Michele Potlow Fund (2010)
 Pottinger Fund (1994)
Katharine Sloan Pratt Fund (2002)
 Harry Precourt Fund (2016)
Robert & Barbara Preiskel Memorial Fund (2002)
 President's Fund (2022)
 Sal J. Prezioso Fund for Westchester's Future (2001)
Sidney S. Prince Trust (1964)
 Margaret Fenton, Samuel and Thomas Pringle Memorial (1957)
 Elizabeth Pritzker Endowment Fund (1985)
 Progress Fund (2022)
 Robert and Ilse Prosnitz Fund (1999)

Publishing Triangle New Voices Fund (2015)
 Publishing Triangle Literary Fund (2004)
 Valerie & Michael A. Puglisi Fund (2003)
 Pulse Patient Safety Education Fund (2018)
 Pyewacket Fund (1997)
 Q Fund (1996)

Q

Alan Grant Quasha Fund (2011)
 Queens College Speech and Hearing Center Fund (1999)
 Alan G. Quitko Fund (1997)
 Quo Vadis Fund (2020)
 Quogue Community Fund (2013)

R

Raab Family Fund (2020)
 Rabinowitz Family Fund (2012)
 Racek-Dowicz Fund (2013)
 Racial Equity Fund (2018)
 Radiance Fund (2018)
 Raymond C. and Diane F. Radigan Fund (2005)
 Radin Family Fund (2005)
 The Ragin Family Fund (2002)
 Rahm Family Fund (2015)
 Raiziss/de Palchi Translation Award Fund (1994)
 Neera & Deepak Raj Fund (2012)
 Calvin Ramsey Scholarship Fund (2003)
Addison C. Rand Fund (1940)
 Lynne S. Randall Charitable Fund (2009)
 Muriel L. and Stephen B. Randolph Fund (2004)
 Dev B. Ranjit Fund (2018)
Rankin-Smith Fund (1985)
 Raskin-Young Family Fund (2017)
 Rawson Family Fund (2010)
***RCH Legacy Fund (2023)**
 RDG Zabel Fund (2011)
 Jeanne and Norman Reader Better English Award Fund (1997)
 Lloyd Reback Scholarship Fund for Physical Therapy (2018)
 Susan Cohen Rebell Fund (1998)
 Red Dog Hill 2010 Fund (2010)
 Redstone Fund (1997)
 Philip D. Reed Fund (1996)
 Thomas D. and Natalie B. Rees Family Fund (1996)
Helen Rehr Fund (2011)
 Joseph E. Reich Fund (1986)
 Henry H. Reichhold Scholarship Fund (1968)
 Reid Family Charitable Fund (2012)
 Reiman Brothers Fund (1999)
 Cordelia and David Reimers Fund (2002)
 Rudyard & Emanuella Reimss Memorial Fund (2001)
 Reingold Family Fund (2000)
 Miriam and Elsie Reinhart Memorial Fund (1991)
 Jerilyn Hayes Reiter Memorial Scholarship Fund (2001)
 Rembrandt Fund (1977)
Eugene H. and Patricia C. Remmer Fund (1986)
 Renal Clinical Fund (2007)
 Renal Research Fund (2007)
 Karl F. Reuling Fund (1993)
 Louis and Mary Reusché Fund (2012)
 Reynwood Fund (1986)
 Reznick Family Giving Fund (2021)
 R. Rheinstein Fund (1999)
 Audrey Rheinstrom and Anne Blevins Fund (2003)
 Rhodebeck Central Park Conservancy Fund (1999)
Rhodebeck Fund for The Elderly (1989)
 Rhodebeck Fund for St. George's Society of New York (2001)
Rhodebeck Fund for The Homeless (1989)
 Rhodebeck Long Island Fund (1998)
 Rhodebeck Prospect Park Fund (2005)
Richard and Mildred T. Rhodebeck Fund (2012)
 Rhombus Fund (2021)
 Rhoda M. Ribner Family Fund (2018)
 Grantland Rice Fellowship Fund (1951)
 Richards Family Fund (1987)

C Richards Fund (2016)
 Richter-Weinberg Fund (2017)
 Marion & George Riley Fund (1968)
 Rinaker Family Fund (1985)
 Henry P. Riordan Fund (1990)
 James and Gloria Riordan Fund (1983)
 Rippe Family Fund (2001)
 The Rising Board Fund (2022)
Virginia S. Risley Family Fund (1995)
Virginia S. Risley Fund (2004)
 Rita Fund (2008)
 Riverwood Fund (2020)
 RKA Fund (2021)
 RME Fund (2007)
 RME Fund B (2021)
Emilie D. Robb Fund (1958)
 Patricia and Yves Robert Fund (1998)
 Roberts Family Fund (1999)
 Virginia and Rodney Roberts Memorial Fund (2015)
 Robin Hopkins Amper Environmental Scholarship (2022)
 Robinson-Morrill Fund (1992)
 Barbara Paul Robinson & Charles Raskob Robinson Fund (1996)
 Marguerite P. Roché Fund (1972)
Laura Spelman Rockefeller Memorial Fund (1928)
 Mary French Rockefeller Fund (1997)
 Charlotte S. and Richard D. Rockwell Fund (1999)
 Rogers Family Fund (1995)
Sarah and Harry Rogers Fund (1994)
 Rollins Family Fund (2018)
Dr. Joseph Richard Rongetti Scholarship Fund (1996)
 Hugh and Katherine Roome Charitable Fund (2012)
 Roosevelt Island Public Purpose Fund (2022)
 Rose Fund (1998)
 Jonathan F.P. Rose and Diana Calthorpe Rose Fund (1996)
 Richard Rose Fund (1981)
 Rose/Margulies Fund (1997)
 Nathan Rosen Memorial Fund (1996)
 Paul I. Rosenberg Fund (2020)
 Jack and Mae Rosenberg Fund (1997)
 Rosenbloom Family Fund (2011)
Rosenfeld Family Fund (1986)
 Rosenkranz Donor-Advised Fund (2022)
 Allen Rosenshine Minority Education and Training Fund (2000)
John P. Rosenthal Fund (1973)
 Rosenthal-Schneier Fund (2009)
 Ida Ross Memorial Fund (1986)
 Lila & Arnold S. Ross Charitable Fund (2000)
 Rossi Family Fund (2010)
Clara Lewisohn Rossin Trust (1949)
 Sidney Roth Memorial Fund (2018)
 Robert and Amy Rothman Family Fund (2007)
 Lynn Forester de Rothschild Fund (2002)
 Roxbury Fund (1997)
 RSVP – For The Children Fund (2006)
 David Rubenfeld Memorial Fund (2018)
 Judith Rubertone Fund (1987)
Lisa Cordell Rubin Fund (1995)
 Robert E. and Judith O. Rubin Fund (2014)
Samuel N. and Charlotte Rubin Fund (1996)
 Frederic A. and Susan A. Rubinstein Fund (1986)
 Pamela and Richard Rubinstein Family Fund (2022)
 Helena Rubinstein Fund (2011)
 Harry J. Rudick Fund (1988)
 Rue de Reves Fund (1987)
 Rufrano Family Fund (2019)
 G & M Rufrano Fund (2007)
 Richard Ruhle P.E. CIPE Memorial Scholarship Fund (2019)
 William and Candace Ruland Fund (2013)
 Thomas Ruotolo Scholarship Fund (1985)
 Cheryl and Stephen Rush Fund (1999)
 William D. Russell Fund (1971)
 Vito and Diana Russo Fund (1988)
 Guy G. Rutherford Fund (2011)
 R.W.K. Charitable Fund (2011)
 Rx Foundation Fund (2006)
 RXR Building Community Fund (2019)
 Rye High School Class of '75 Fund (2017)
 Rye Scholarship Fund (1977)

S

Myrten G. and Lillian V. Saake Memorial Fund (1994)
 Bonnie and Peter Sacerdote Family Fund (1975)
 Samuel Sacks Funds (1975)
 Safer-Fearer Fund (1998)
 Nola Safo Fund (2011)
 Dr. Abraham and Shirley Saifer Fund (1992)
 Joseph A. and Dorothy A. Salat Charitable Fund (2020)
 Jane Salmon and Jerry Gliklich Fund (2022)
 Saltzman Fund (1987)
 Nathan and Nancy Sambul Fund (1997)
 Flossie Samuels Fund (2015)
 Sarah A. Sanford Fund (1949)
 Linda U. Sanger Charitable Fund (1999)
 Polly Weintz Sanna Fund (2020)
 SAR Family Fund (2012)
***The Sarah 2022 Fund (2023)**
 John Sare Fund (2012)
 Dr. John E. Sarno Memorial Fund (2017)
 Michael Sasse Charitable Fund (2001)
 Saunders Conservation Psychology Scholar Award (2018)
 Richard W. Savino Memorial Fund (2013)
 Schalet Family Fund (2017)
 Brigitte Holmen Schattenfield Family Fund (2002)
 Dossie Schattman Fund (2007)
 Bernardo Scheimberg Fund (2014)
 Schein Family Memorial Fund (1987)
 Henry Schein Inc., Company Fund (2003)
 Ruth and James Scheuer Fund (2010)
Jacob H. Schiff Memorial (1924)
 Jacqueline Schiller Fund (1998)
 Max G. Schlapp Mental Hygiene Fund (1979)
 Schlegel Family Fund (2005)
 Grace and Edith Schneider Memorial Fund (1949)
 Schneiderman Family Fund (1994)
 Schneidman Family Fund (2000)
 Estella J. Schoen Charitable Fund (2012)
Anna E. Schoen-René Fund (1942)
 Frederick K. Schoff and Maureen A. Mackey Charitable Gift Fund (2009)
 Scholarships For Kids Fund (1993)
 Caroline and Sigmund Schott Fund (1999)
George Schreiber Fund (1991)
 Elizabeth Schulte Fund (2013)
 Dr. Lester J. Schultz Memorial Fund (1984)
 John W. Schulz Memorial Fund (2000)
 Schwabian Fund (2009)
 Robert and Lynne Schwartz Fund (1986)
 Schwartz Family Fund (1991)
 Arlene Schwartz Family Fund (2018)
 Robert Schwartzman Fund (2022)
 Robert J. Schweich Fund (1981)
 Alfred H. Schwendtner Fund (1996)
 Sandra Scime Charitable Fund (2012)
 Gail Aidinoff Scovell and Edward P. Scovell Fund (1986)
 Sea Cliff Fund (1986)
 Seal Point Foundation (1966)
 Sealion Charitable Fund (1998)
***Seeley Family Fund (2023)**
 Seiden Family Fund (2022)
 Selby/Vail Fund (2001)
 Selig Family Fund (2012)
 Selig Fund (1991)
 Samuel and Stella Seligsohn Memorial Fund (1996)
***Judith Selkowitz Enrichment Fund (2023)**
Mamie Seller Memorial Fund (1978)
 Jerome and Joan Serchuck Fund (1971)
 Serena Foundation Fund (2010)
Alfred M. Serex Fund (1999)
Severinghaus Fund (2011)
 J. Walter and Helen C. Severinghaus Fund (1988)
William H. Seward, Jr. Fund (1962)
 Sewell Fund (2007)
 Shah-Domenicali Family Fund (2005)
 Harris Shapiro Fund (1996)
Shaw Foundation Fund (1964)
 Morna Ford Sheehy Fund (2019)
 Sheinberg Family Fund (1996)
 Serena Fairchild Sheldon Fund (2009)
 Henry H. Shepard Fund (2008)
 Lola J. Sherman Fund (1937)

Fannie Sherr Fund (2006)
 Shiffman Family Fund (2012)
 Shinnecock Bay Stewardship Fund (2011)
 Shoemaker Family Fund (2014)
 Shomstein Family Fund (2016)
 Shover/Enrietto Family Fund (2016)
 Jack and Dorothy Shulman Memorial Fund (1984)
 Shyer Vision Fund (2015)
 Anne P. Sidamon-Eristoff Fund (2007)
 Catherine and Andrew Sidamon-Eristoff Family Fund (2003)
 Elizabeth Sidamon-Eristoff Fund (2003)
 Nancy Sidamon-Eristoff Fund (2014)
 Simon Sidamon-Eristoff Fund (2003)
 Siebert Family Fund (2001)
 Jayne M. Silberman Fund (1986)
 Lois and Samuel Silberman Grant Fund (1992)
 Ruth and Marvin Silberman Memorial Fund (1967)
 Dale and Martin Silver Fund - closed 12/26/23 (2021)
 Al and Rosa Silverman Fund (1994)
 Alan Silverman Charitable Fund (2004)
 Lynn Silverman Family Fund (2006)
 Marty and Dorothy Silverman Fund (2001)
 Silverstein Family Fund (2007)
 Arlene B. Simon Fund (1986)
Robert M. Sims/Robert L. Albright Fund (2009)
Cecile Singer Fund (2000)
***Singing Wood Fund (2023)**
 Sinha Family Fund (2008)
 Stephen Sirkin Memorial Fund (1984)
 Skipjack Fund (2006)
 Lisa Mattie Slater Williams Memorial Fund (2018)
 Carl Slater Memorial Fund (1998)
 Randy Slifka Philanthropic Fund (2006)
 Edward and Adele Slutsky Memorial Fund (2015)
 Lorie A. Slutsky Philanthropy Fellowship (2022)
 Bowen & Janet Smith Family Fund (2012)
 Bradford & Pamela Smith Charitable Fund (2000)
 Colonel William Smith Foundation (1984)
 Deborah A. Smith Fund (1986)
 H. Brooks Smith Donor Advised Fund (2016)
 Jacqueline and Albert Smith Fund (1993)
 Meredyth H. Smith Charitable Fund (1997)
***Suzanne K. Smith Fund (2023)**
 E. & R. Smits Fund (2001)
 Richard L. Snyder Fund (1991)
 Michelle Sobel Literacy Fund (2006)
 The Amy Solas and Richard Klein Family Fund (2020)
 L. & S. Soll Fund (1998)
***The S. and L. Soll Philanthropic Fund (2023)**
 David & Nancy Solomon Fund (2000)
 John D. Solomon Fund for Public Service (2010)
 John D. Solomon Scholarship Fund for Public Service (2017)
 Hannah Fox Solomon Fund (2002)
 Karena Somerville AWC Scholarship Fund (1992)
 Dr. John B. Sommi Fund (2003)
 Abe, Lena and Irin Soskis Memorial Funds (1984)
 Fernando Soto, Jr. Fund (2000)
 Alireza Soudavar Fund (1986)
 Mammadi Soudavar Memorial Fellowship Fund (1982)
 Dr. Patricia M. Sovern Fund (2003)
 Rose M. Soybel Rose Garden Fund (1997)
 Carol and Charles Spaeth Memorial Fund (1986)
 Spanky Tomato Fund (2012)
 Special Fund No. 11 (1968)
Special Fund No. 14 (1950)
 Special Fund No. 20 (1962)
 Tivy Spence Achievement Fund (1999)
 Arthur L. Spencer Memorial Scholarship Fund (2002)
 James and Susan Spero Fund (2021)
 Sperry Van Ness/Joe French Endowment Fund (2004)
 Jerry I. Speyer and Katherine G. Farley Family Fund (2019)
 Marion R. Spinnler Education Fund (1970)
 Jerry Spitz Charitable Fund (2008)
 Marilyn R. Sporty Fund (2020)
 Squadron A Fund (1983)
 St. Christopher's School Fund (1974)



An Innovator Supports his Community

William H. Burkhardt
 1899-1976

William H. Burkhardt Fund

A chemical engineering graduate of the University of Pennsylvania, William Burkhardt rose through the ranks to become president of Lever Brothers. He was responsible for introducing liquid laundry detergents, bars of soap containing cleansing cream, and margarine that was advertised as the first to taste like butter, lifting the company to profitability. In an address to his former high school, he encouraged students to "... develop an insatiable curiosity." His unrestricted fund at The Trust supports multiple causes in New York.

***The Stachelberg Family Fund (2023)**
 Stack Family Fund (1994)
Ilma Stafford-Greene Fund (1977)
 Staller Scholarship Fund (1987)
Erwin P. and Pearl F. Staller Charitable Fund (1992)
 Stankard Family Fund (2010)
 Stanley, Story, Crane Fund (2010)
 Alma Timolat Stanley Fund (1987)
 Staples Family Fund (2008)
 STAR Fund (2021)
 Adam E. Stark Memorial Scholarship Fund (2001)
 Adam E. Stark Memorial Jewish Youth Fund (2021)



A Champion for LGBTQ+ New Yorkers

Bruce Dresner

1953-1992

Bruce Dresner Fund

Bruce Alan Dresner was a tax attorney and estate planner, athlete, and gourmet dinner-party host. He also was a strong supporter of gay and lesbian advocacy, deeply committed to organizations such as the **Lesbian, Gay, Bisexual & Transgender Community Center** and **Gay Men's Health Crisis**. Both he and his soulmate, Craig McConnell, died during the AIDS epidemic of the 1980s and early '90s. His fund at The Trust is for the LGBTQ+ community.

Stars and Stripes Fund (1988)
Betty J. Stebman Fund (2005)
 Patricia S Steele Fund (2009)
 Steinberg Charitable Fund (2012)
 Albert and Marie Steinert Fund (1991)
 Nancy Steinman Fund (2003)
 Stella Fund (2018)
 Stemland Family Fund (1991)
 Stephen and Roger's Fund (2018)
 Stephens Bequest (1942)
 Stepinac Fiftieth Reunion Scholarship Fund (2006)
 Sterling Fund (1985)
 Roslyn & Samuel Stern Family Fund (2020)
Ida Miriam Stern Fund (2018)
 Henry J. Stern & Robert F. Wagner, Jr. Fund (1982)
 Ettie Stettheimer Memorial Fund (1961)
 Helen, Emily and Margaret Stevens Fund (2004)
 Stewardship and Sustainability Fund (2020)
 Andrew Stewart Memorial Fund (1999)
 Stewart Family Fund (2019)
 Gertrude Stewart Memorial Scholarship Fund (1971)
 Kate H. Stiassni Fund (1999)
 Still Waters Fund (2016)
 Nancy J. Stockford Donor-Advised Fund (2012)
 Stonehome Fund (1956)
 Samantha Fairchild Storkerson Fund (2009)
 Edward K. Straus Fund (1951)
 Joan Fuld Strauss Charitable Fund (2011)
 Lise Strickler and Mark Gallogly Charitable Fund (2010)
***Strober Charitable Fund (2023)**
 Stronach-Buschel Fund (1995)
 Mabel Louise Stuart Fund (2018)
Carole Stupell Travel Award Program (2003)
 Sturmer Family Fund (1996)
 Subramanian Family Fund (2013)
 Wa Sudderth Fund (2019)
 Suelin Memorial Charity Fund (2021)
 Suffolk County Census 2020 Fund (2020)
 Henriette Granville Suhr Fund (2016)
 William and Henriette Granville Suhr Fund for The Environment (2016)
 Sullivan Family Fund (1994)
 Kathleen A. Sullivan Fund (2018)
 Kalyan Sundaram Fund (2006)
 Sunken Meadow Fund (2018)
 Sunlight Fund (2012)
 Billy Sunshine Memorial Scholarship Fund (1985)
 Sunshine-T Charitable Fund (2016)
 Surrogate's Court Fund (1991)
 James A. and Katherine D. Sutton Fund (1999)

Suzy's Fund (2009)
R. Swayze Gay and Lesbian Youth Fund (1996)
 Carol & Jim Swiggett Fund (1997)
 Dorothea H. Swope Fund (2015)
 Syzygy Fund (2014)

T

Hazaros Tabakoglu Scholarship Fund (1994)
 Monica and Angelo Tabone Fund (2018)
 Martin Tackel & Abbe Raven Family Fund (1998)
 Robert A. Taft Institute of Government Trust (1969)
 Ruth Saltzman Taishoff Fund (1996)
 Peter Talbert Charity Fund (1999)
 W. Pike Talbert Charitable Fund (1986)
 Nancy and Jay Talbot Fund (2009)
 James Talcott Fund (1974)
 Gail & Michael Talent Memorial Fund (2003)
 Brian and Danielle Tane Charitable Fund (2007)
Helen S. Tanenbaum Fund (1954)
 Nicki & Harold Tanner Fund (2001)
 James and Marie Taormina Fund (1999)
 Alfonso Tapia and A. L. Rose Memorial Fund (1994)
 Tarrytown/Sleepy Hollow Fund for Kids (2010)
 Tate Family Fund (2012)
 Dave Taylor Memorial Fund (1995)
William J. Taylor Fund (1959)
 Tealison Fund (1998)
 Tealison Two Fund (2001)
 B. and U. Tenny Fund (2009)
 Buzz Tenny Fund (2011)
 William Clark Terry Scholarship Fund (1983)
 Thackeray Fund (2005)
Thomas COPD Fund (1996)
Eric E. Thomas Memorial Fund (2021)
Thomas Fund (1995)
 Marvin and Doris Thomas Fund (1996)
 Thomas Street Fund (2014)
 Grandchildren of Fred & Florence Thomases Fund (1999)
 Suzanne Thompson Fund (2007)
 Judith Dana Thorne Fund (1990)
 Nathan C. and Margaret Y. Thorne Fund (2012)
 Nathan & Nicholas Thorne Fund (2012)
 Olaf J. and Margaret L. Thorp Fund (1987)
 316th Association Memorial Funds No. 1 & 2 (1994)
 316th Infantry Monument Fund (1969)
 Threerandomwords Fund (2003)
 The Roger Tilles Fund for The Arts (2022)
Annie Rensselaer Tinker Fund (2018)

Tobacco Pink Fund (1977)
 Carol H. Tolan Fund (1997)
 Starr Tomczak Fund (2019)
Nathaniel and Sarah Tooker Fund (1972)
 Susan M. Topiel Memorial Fund (2014)
 Arnold and Caren Toren Fund (2004)
 Touchstone Fund (2002)
 Town Hill School Fund (1995)
 Trabout Fund (2006)
Traer Fund (1976)
Charles Welford Travis Trust (1981)
 Trevor Fund (1986)
 Harry D. Triantafillu Fund (1986)
 Triantafillu Fund (1983)
 Harry D. Triantafillu Fund No. 2 (2001)
Trinity Chapel Home Fund (1960)
 Tripod Fund (1979)
 John B. & Louisa S. Troubh Fund (1993)
 Jimmy Cheong Hang Tsang Fund (2013)
 TTS Fund (2017)
 W. Lee Tuller Memorial Fund (1983)
 W. Lee Tuller Memorial Education Fund (1983)
 Turner Fund (1999)
Paul N. Turner Bequest (1960)
 Charles P. Twichell Fund (1995)
 2007 Charitable Trust Fund (2007)

U

Arno and Peppi Ucko Family Fund (1998)
 Beth M. Uffner Arts Fund (1998)
 Umbrella Fund (2009)
 Unrequited Love Fund (2010)
 Marjorie & Clarence E. Unterberg Foundation, Inc. Fund (2012)
 Ann and Thomas Unterberg Fund for Children (2018)
Nina Untermyer Fund (2016)
 Updike Family Fund (2018)
 The Up-town Fund (2008)

V

Gilad Vaday Fund (2000)
 Emily & Harold E. Valentine & Evelyn Gable Clark Scholarship Fund (2005)
 Anne van Biema Fund (1996)
 van Hengel Family Fund (1980)
Edward and Sally Van Lier Fund (1988)
Lottie Grace Vanderveer Funds No. 1 & 2 (2005)
 Rudolf and Anna Marie Vetter Memorial Fund (1977)
 R.G. Viault Family Fund (1999)
 Victory Fund (2010)
 Joseph Vigilante Fund for The Adelphi School of Social Work (2000)
 John L. Vigorita, M.D. Memorial Fund (1991)
 Phyllis S. Vineyard Fund (1996)
 Vinmont Fund (2006)
 Vishnick Family Charitable Fund (2001)
 Vo Van Jacques and Thai Thi Tam Memorial Fund (2004)
 Jeffrey and Stephanie Voell Family Fund (2001)
 Richard & Virginia Voell Family Fund (1986)
 Vogel Family Charitable Fund (2006)
 Hans A. Vogelstein Memorial Scholarship Fund (1982)
 Voices from The Heart Fund (1997)
***Marianne Volpe & Debbie-Ann Chang Charitable Fund (2023)**
 Mrs. Claus von Bulow Fund (1971)
 Dr. Robert and Olga von Tauber Fund (2013)
Enders M. Voorhees Fund (1973)
 Amah Vought Memorial Health Fund (2005)

W

***Nancy Wackstein General Operating Support Fund (2023)**
 Elizabeth & Eugene Wadsworth Charitable Fund (1999)
 Marian Marcus Wahl Memorial Fund (1985)
 Wainwright Fund (2012)
 Waizer Walsh Family Fund (2020)
 Christina Walker Fund (2003)

Bayard Walker, Jr. Charitable Fund (2003)
 J. Miller Walker Fund (2005)
DeWitt Wallace Fund for Youth (1982)
Frederick J. and Theresa Dow Wallace Fund (1977)
 Lila Acheson Wallace Fund for The Arts (1984)
 Wallace Special Projects Fund (1991)
Theresa Dow Wallace Scholarship Fund (1975)
 Waller-Davidson Fund (1980)
 Bridget Huddy Walsh Fund (2022)
 John J. Walsh Fund (2012)
Martin T. Walsh Scholarship Fund (2020)
 Anthony W. and Lulu C. Wang Fund (1996)
 N.T. and Mabel Wang Charitable Fund (2004)
 Moritz and Charlotte Warburg Memorial (1925)
 Elizabeth and Andrew Ward Charitable Fund (2012)
David and Mary Warfield Funds (1973)
David Warfield Funds (1951)
Mary Warfield Fund (1971)
 Bradford A. and Nancy H. Warner Fund (1985)
 Bernice and Irwin Warshaw Fund (1990)
 Warwick Charitable Fund (2013)
 Nicholas C. Wasicsko Scholarship Fund (1993)
Watcha Fund (1988)
 Wattles Family Charitable Trust Fund (1981)
Alice W. Wattles Fund (1974)
James Howard Wattles Fund (1947)
 Weber Family Fund (2002)
 Damon Weber Fund (2005)
 Rita and Stanley Wecker Fund (2015)
 Ellen Z. Wedeles Memorial Fund (2017)
 Thomas Wegman Family Fund (2019)
 Weil Bauchner Family Fund (2014)
 Alex E. Weinberg Fund (2007)
Edna and Frederick Weingarten Fund (1984)
 Seymour and Kathleen Weingarten Fund (2005)
 Sarah Weingarten Fund (2021)
 Martin Weinstein and Teresa Liszka Fund (2016)
 Elizabeth Weintz Cerf Family Fund (2020)
 Karl F. Weintz Fund (2020)
 Eric C. Weintz Fund (2020)
Mabel W. Weir Trust (1978)
 Hilda S. & Theodore T. Weiser Memorial Fund (1998)
 Nathan H. Weiss Memorial Fund (1999)
 Rebecca & Nathan Weiss Fund (1997)
 Cyrus and Carolyn Weiss Fund (2016)
 WellMet Philanthropy (1999)
***West River Fund (2023)**
Herbert B. West Fund (1989)
 Westbury High School Class of 1967 Education Fund (2017)
 Westchester Community Foundation (1975)
 Westchester COVID-19 Response Fund (2020)
 Westchester Cultural Research Fund (2019)
 Westchester Cumulus Fund (2009)
 Westchester Fund for Women and Girls (1992)
 Westchester Health Fund (2003)
 Westchester Opportunity Fund (1993)
 Westchester Poetry Fund (2000)
 Westchester Wilderness Walk Fund (2001)
 Westchester Workforce Fund (2017)
Florence and Elliot Westin Fund (2010)
 Wheeler Fund (1992)
Betty Wheeler Fund (1991)
 Where There's A Will Fund (2012)
Letitia M. Whipp Memorial Fund (1972)
 White Post Farms Charitable Fund (2015)
 Bill Whitehead Award Fund (1993)
 Audrey J. Randall Whiting and Hon. Robert R. Whiting Fund (2021)
 Whitman-Salkin Meyer Fund (2015)
 Edward B. Whitney Fund (1986)
Frederic J. Whiton Fund (1960)
 Who's on First Fund (2021)
 Barbara E. Wiedemann Fund (2015)
 Mary L. Wiener/Sanford M. Cohen Fund (1986)
 Frank E. Wigg Charitable Fund (1993)
 Carleton Wiggins and Donald Bain Trust (1982)
 Donna Bain Wiggins Trust (1982)
 Dharma Wolf Wild/Amelia Miller Memorial Fund (2020)
Robert O. Wilder Fund (1989)
 Mason Wiley Memorial Fund (1995)
 Roy Wilkins Fund (2018)
 Cynthia & Alan Wilkinson Fund (2003)
 Linda and Richard Willett Advised Fund (2019)
 Linda and Richard Willett Fund (2017)
 Charles J. Williams Fund (1986)
Henry K. S. Williams Trust No. 1 (1944)
Henry K. S. Williams Trust No. 2 (1944)

Mildred Anna Williams Fund (1940)
Oscar Williams and Gene Derwood Fund (1971)
 Robert I. & Lucille B. Williams Fund (1996)
 Bruce R. Williamson Fund (1998)
 Douglas Williamson Fund (1997)
 Willkie Farr & Gallagher Fund (1984)
Sam Wilner Fund (1997)
John H. T. Wilson Fund (1988)
 William Ross Reid Wilson Memorial Fund (1991)
 Wilstock Fund (1994)
 Wilton-Risdon Fund (1994)
 Wiltwyck School Fund (1988)
 Wind Down Fund (1989)
 Windie Knowe Funds (2003)
 Windsor Fund (1977)
 Jay Winston Scholarship Fund (1997)
 Winterer Fund (1986)
 Winthrop Family in America Fund for Groton Church (1982)
 John Winthrop Fund (1970)
Margaret S. Winthrop Fund (1972)
Leone Scott Wise Fund (1986)
 Witherspoon Fund (2012)
 Witkin Family Fund (1988)
 Kate and Richard Witkin Family Fund (1988)
 Joanne Witty and Eugene Keilin Fund (1986)
 Wolcott Family Charitable Fund (2019)
 C. Theodore Wolf & Francis X. Decolator II Fund (1996)
 Wolf Baumer Fund (2015)
 Morton S. and Betty Wolf Fund (2022)
 John and Martha Wolf Fund (2017)
 Wolfe/Inadomi Fund (2012)
 Women First Fund (2007)
Jadin Wong Fund (2011)
 Wood Thrush Fund (2004)
 Joseph Woolfson Fund (2010)
 Work Long Island Fund (2005)
 World Trade Center Hoboken Memorial Scholarship Fund (2002)
 World-Wide Fund (2002)
 Clara Kennon Worley Fund (1973)
 Worth Fund (1992)
 Wray Family Fund (1986)
 Bruce Wrobel Memorial Fund (2014)
Seymour B. Wurzler Bequest (1963)

Y

J. Ernest Grant Yalden Memorial Fund (1956)
 Yang Family Fund (2006)
 Patricia (Patsy) Yang Charitable Fund (2021)
 Patricia (Patsy) Yang Fund (2021)
 Dr. Walter M. Yannett Memorial Fund (2011)
 Yaseen Lectures on The Fine Arts (1971)
 Millicent B. Yinkey Fund (2007)
 The Yonce Family Fund (1986)
 Yorktown Charitable Fund (2019)
 H. R. Young and Betty G. Young Fund (1979)
 Nancy Young and Paul B. Ford, Jr. Fund (1986)
 Thomas and Elsie Young Fund (2000)
 Youth and Philanthropy Initiative USA Fund (2018)
 Stephane Yulita Children's Fund (1989)

Z

Judith and Stanley Zabar Fund (1993)
 John & Catherine Zacharias Family Fund (2003)
 Eileen Geduld Zaglin Scholarship Fund (1993)
Elliott Zagor Fund (2015)
 Zakat Fund of NYC (2016)
 Evelyn G. Zamboni Fund (1986)
***Zapleap Philanthropic Fund (2023)**
 Bobby Zarin Memorial Fund (2009)
***Irene and Stacy Zelnick and Jade A. Walker Charitable Fund (2023)**
 Benjamin & Ethan Zemel Charitable Fund (2014)
 Ziano Fund (2007)
Joel Zimmerman Fund (1996)
 Zofnass/Ring Family Fund (1991)
 Corinne and Neil Zola Fund (2014)
 ZPM Fund (1986)

To see a list of grants made by The Trust in 2023, go to our website, www.thenytrust.org, or scan this QR code.



Apply for a grant.

We're committed to critical issues that may not lend themselves to easy solutions, while remaining open to projects that tackle emerging issues and to organizations that may be new to us. For instructions on how to apply, visit our website, www.thenytrust.org.

Our Commitment.

The Trust is an amalgam of people, ideas, and systems—all united by one commitment: to improve our region. These 2023 numbers (below) are a glimpse of The Trust as it nears its 100th anniversary.

Grants awarded since 1924

\$5.7B

Number of grants made in 2023

10,220

Amount awarded in 2023

\$194.7M

Funds at The Trust

2,254

Years in operation

100

Number of Trust presidents since founding

4

Number of full-time staff

69

Counties served

8

People Served

12.4M+

New York City 8.5M
Westchester 1M
Suffolk 1.5M
Nassau 1.4M

Our Mission

As New York’s community foundation, we foster and engage in enduring and innovative philanthropy.

Our Vision

Equitable and thriving communities throughout New York City, Long Island, and Westchester.

Your fund at The Trust can make a difference on the issues and in the neighborhoods you care about.

Reach out to us to get started today.

www.giveto.nyc
giving@thenytrust.org
(212) 686-0010 x363

www.thenytrust.org

NYC Office

909 Third Ave.
22nd Floor
New York, NY 10022
(212) 686-0010

Long Island Office

50 Vanderbilt Motor Pkwy.
Commack, NY 11725
(631) 991-8800

Westchester Office

210 North Central Ave.
Suite 310
Hartsdale, NY 10530
(914) 948-5166

Find us on:



Young people mix
music at grantee
**Willie Mae Rock
Camp.**



For

LGBTQ+
Brooklyn
The Arts
Children & Teens
Staten Island
Health & Behavioral Health
Long Island
Housing & Economic Opportunity
The Environment

New York

Older Adults
Westchester
Manhattan
People with Disabilities
The Bronx
Queens
Justice
Democracy

Forever.